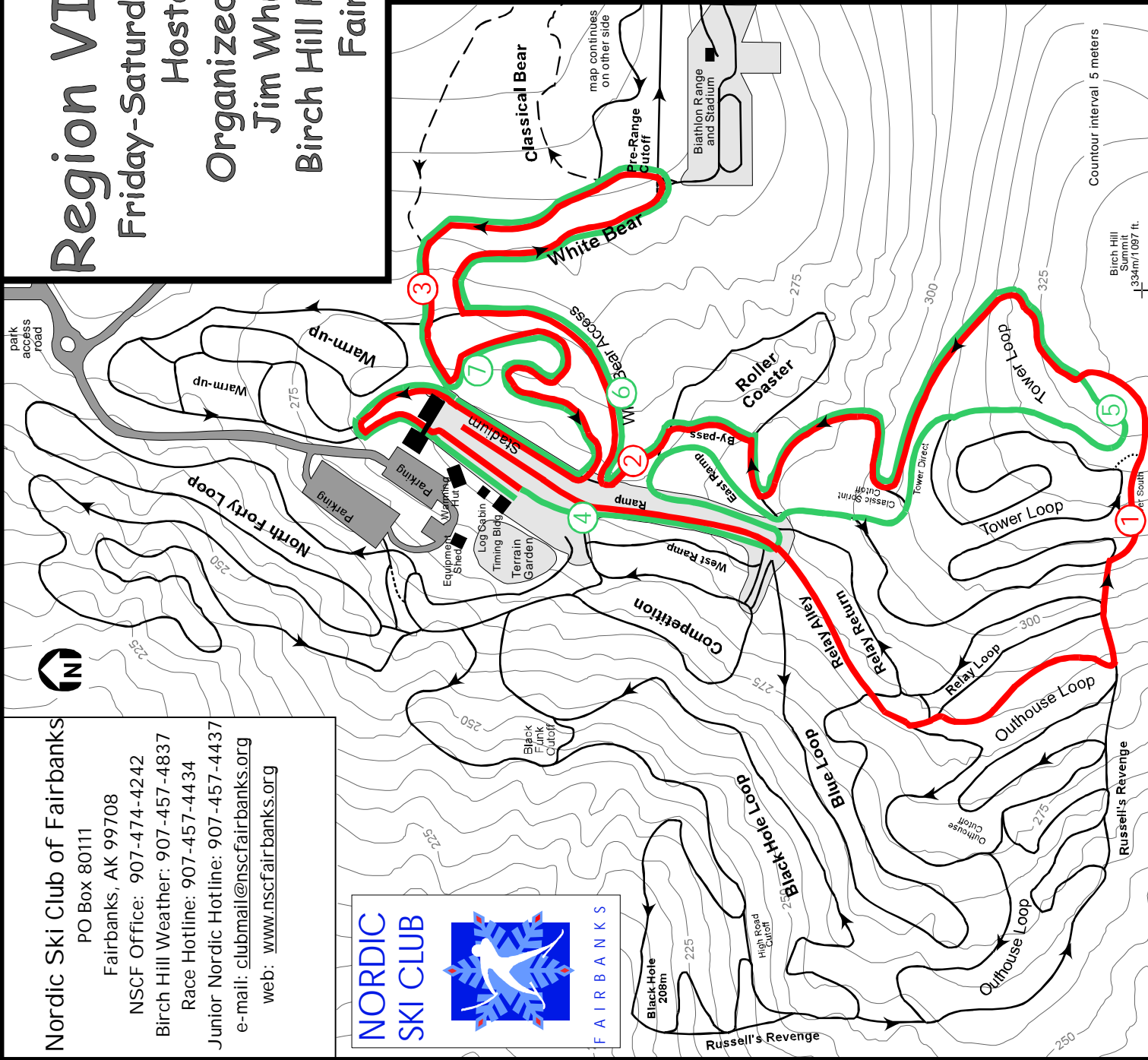


**Nordic Ski Club of Fairbanks**  
 PO Box 80111  
 Fairbanks, AK 99708  
 NSCF Office: 907-474-4242  
 Birch Hill Weather: 907-457-4837  
 Race Hotline: 907-457-4434  
 Junior Nordic Hotline: 907-457-4437  
 e-mail: [clubmail@nscfairbanks.org](mailto:clubmail@nscfairbanks.org)  
 web: [www.nscfairbanks.org](http://www.nscfairbanks.org)



# Region VI Championships

Friday-Saturday, February 12-13, 2010  
 Hosted by Region VI  
 Organized by NSC Fairbanks  
 Jim Whisenant Ski Trails  
 Birch Hill Park Recreation Area  
 Fairbanks, Alaska

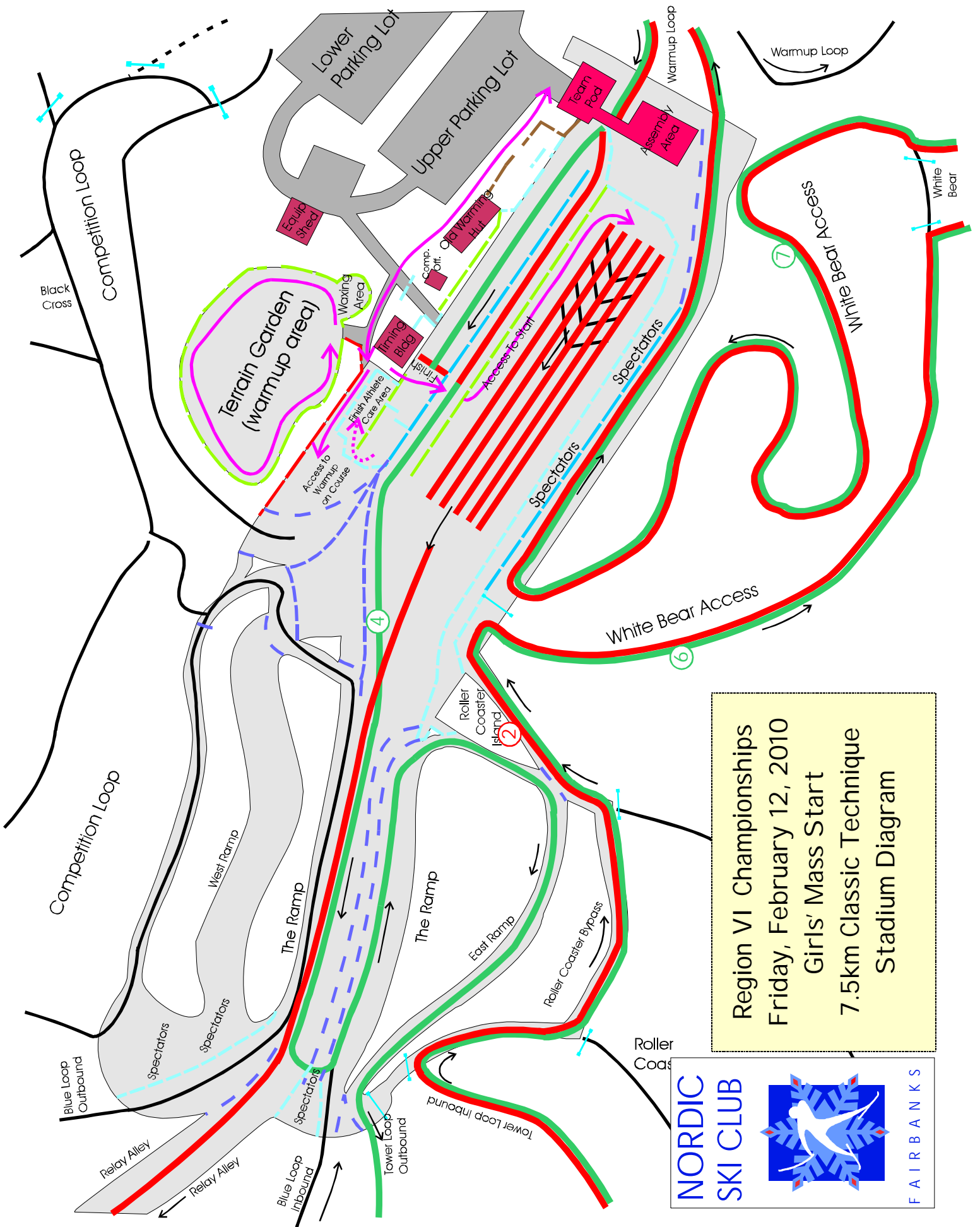
Friday, February 12, 2010  
 Girls 7.5Km  
 Mass-Start Classic Technique  
 Red Course (lap 1) &  
 Green Course (lap 2)

## Technical Information:

Measured Length: 7778m  
 Height Difference (HD): 73m  
 Total Climb (TC): 242m  
 Maximum Climb (MC): 42m  
 Climb per Km: 31.2m/km

## Competition Committee:

Chief of Competition: John Estle  
 Chief of Secretariat: tba  
 Chief of Course: Tom Helmers  
 Chiefs of Stadium: Dave Murray,  
 Bob Wilkinson, Susan Faulkner  
 Chief of Timing: Carol Haas  
 Chief of Competition Control: tba  
 Region VI Representative: Missy Poeschl



Region VI Championships  
 Friday, February 12, 2010  
 Girls' Mass Start  
 7.5km Classic Technique  
 Stadium Diagram

**NORDIC SKI CLUB**  
  
**FAIRBANKS**

**Nordic Ski Club of Fairbanks**  
 PO Box 80111  
 Fairbanks, AK 99708  
 NSCF Office: 907-474-4242  
 Birch Hill Weather: 907-457-4837  
 Race Hotline: 907-457-4434  
 Junior Nordic Hotline: 907-457-4437  
 e-mail: [clubmail@nscfairbanks.org](mailto:clubmail@nscfairbanks.org)  
 web: [www.nscfairbanks.org](http://www.nscfairbanks.org)



# Region VI Championships

Friday-Saturday, February 12-13, 2010  
 Hosted by Region VI  
 Organized by NSC Fairbanks  
 Jim Whisenant Ski Trails  
 Birch Hill Park Recreation Area  
 Fairbanks, Alaska

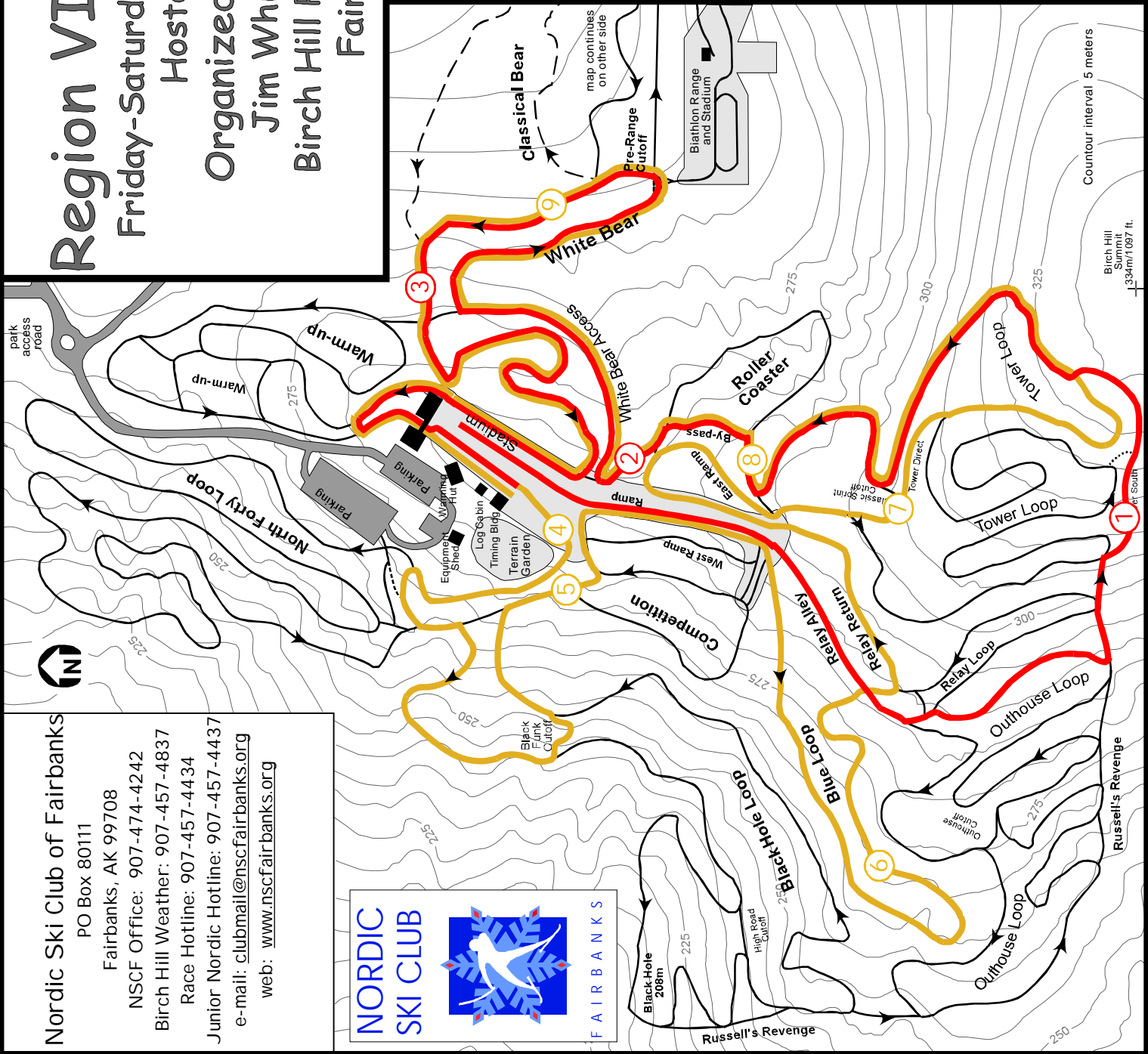
Friday, February 12, 2010  
 Boys' 10Km  
 Mass-Start Classic Technique  
**Red Course (lap 1) &**  
**Gold Course (lap 2)**

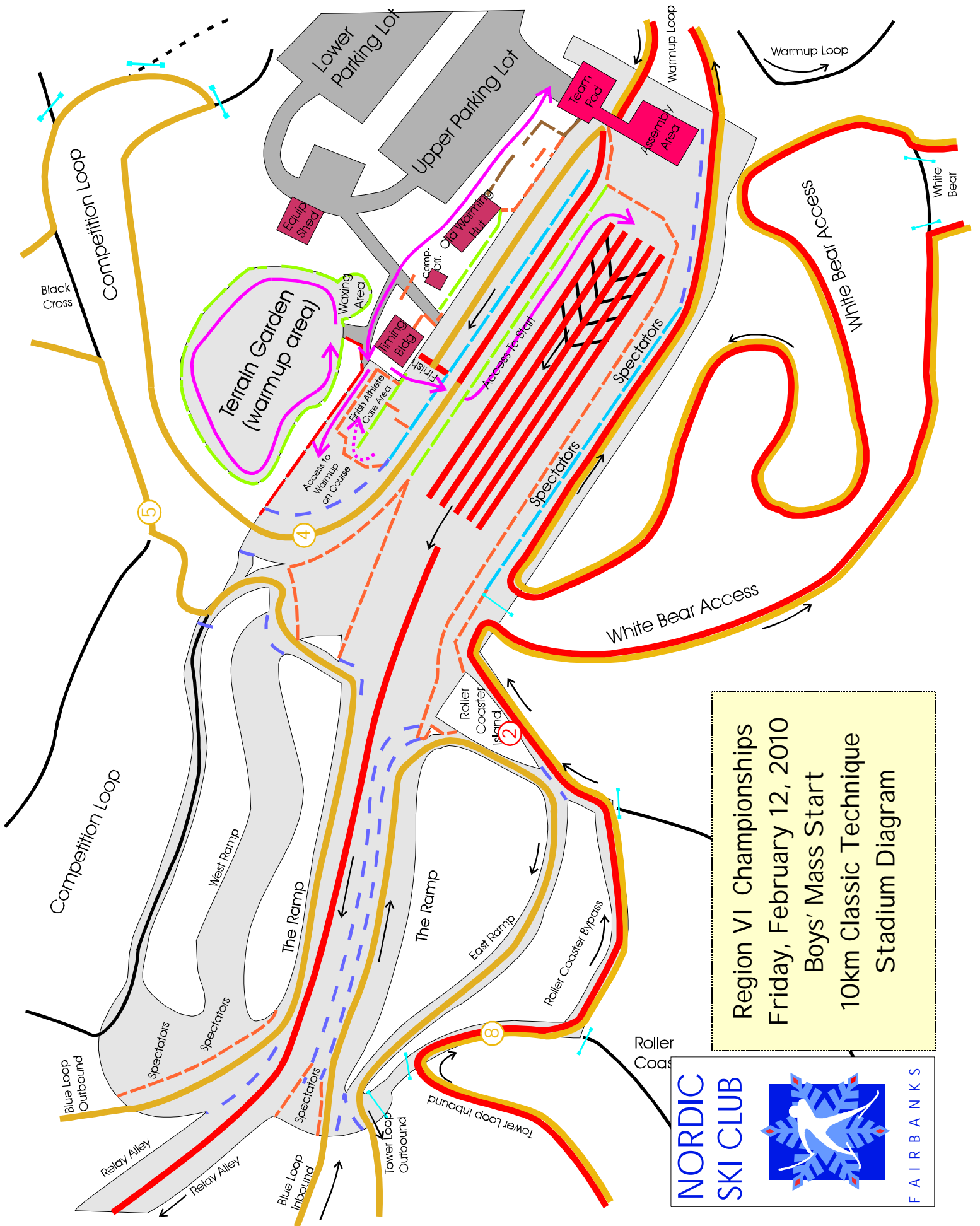
## Technical Information:

Measured Length: 10104m  
 Height Difference (HD): 89m  
 Total Climb (TC): 355m  
 Maximum Climb (MC): 54m  
 Climb per Km: 35.2m/km

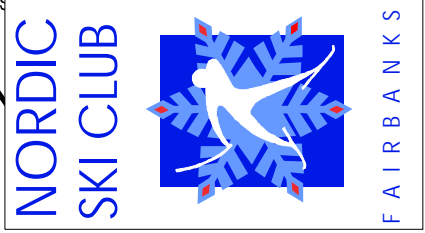
## Competition Committee:

Chief of Competition: John Estle  
 Chief of Secretariat: tba  
 Chief of Course: Tom Helmers  
 Chiefs of Stadium: Dave Murray,  
 Bob Wilkinson, Susan Faulkner  
 Chief of Timing: Carol Haas  
 Chief of Competition Control: tba  
 Region VI Representative: Missy Poeschl





Region VI Championships  
 Friday, February 12, 2010  
 Boys' Mass Start  
 10km Classic Technique  
 Stadium Diagram



# Mass-Start Setup - Large Field

## Multi-Lap

Spectator Area

Clothing Bag Service

3 Black Sleds for Clothing

Continue Numbering to Largest Field Size

Lap Lane During Race

2m

Competitor Entrance

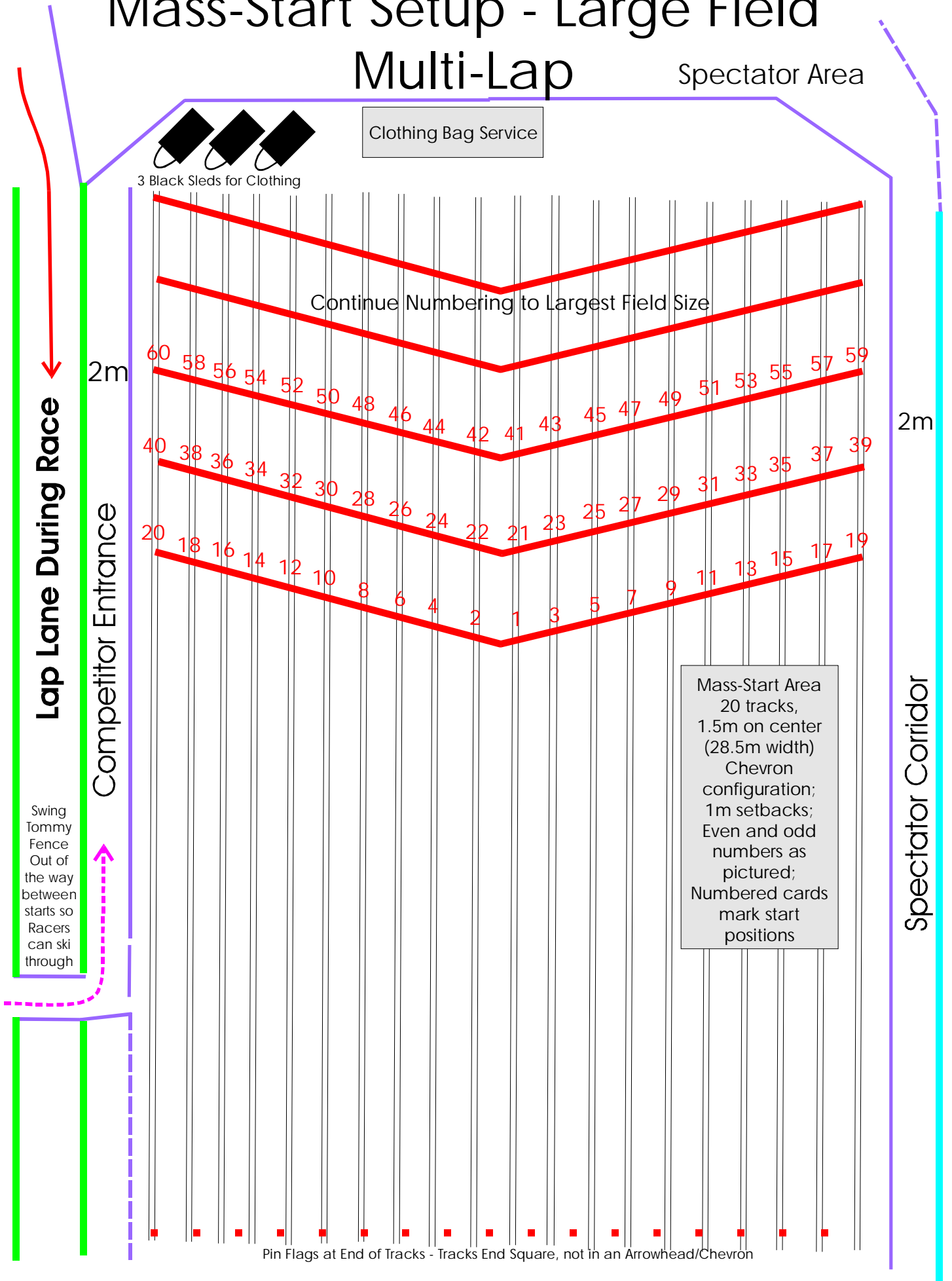
2m

Spectator Corridor

Swing Tommy Fence Out of the way between starts so Racers can ski through

Mass-Start Area  
20 tracks,  
1.5m on center  
(28.5m width)  
Chevron  
configuration;  
1m setbacks;  
Even and odd  
numbers as  
pictured;  
Numbered cards  
mark start  
positions

Pin Flags at End of Tracks - Tracks End Square, not in an Arrowhead/Chevron



# Start Mesa and Lap/Finish Area Setup - Multi Lap

## Mass Start / Classic Technique

