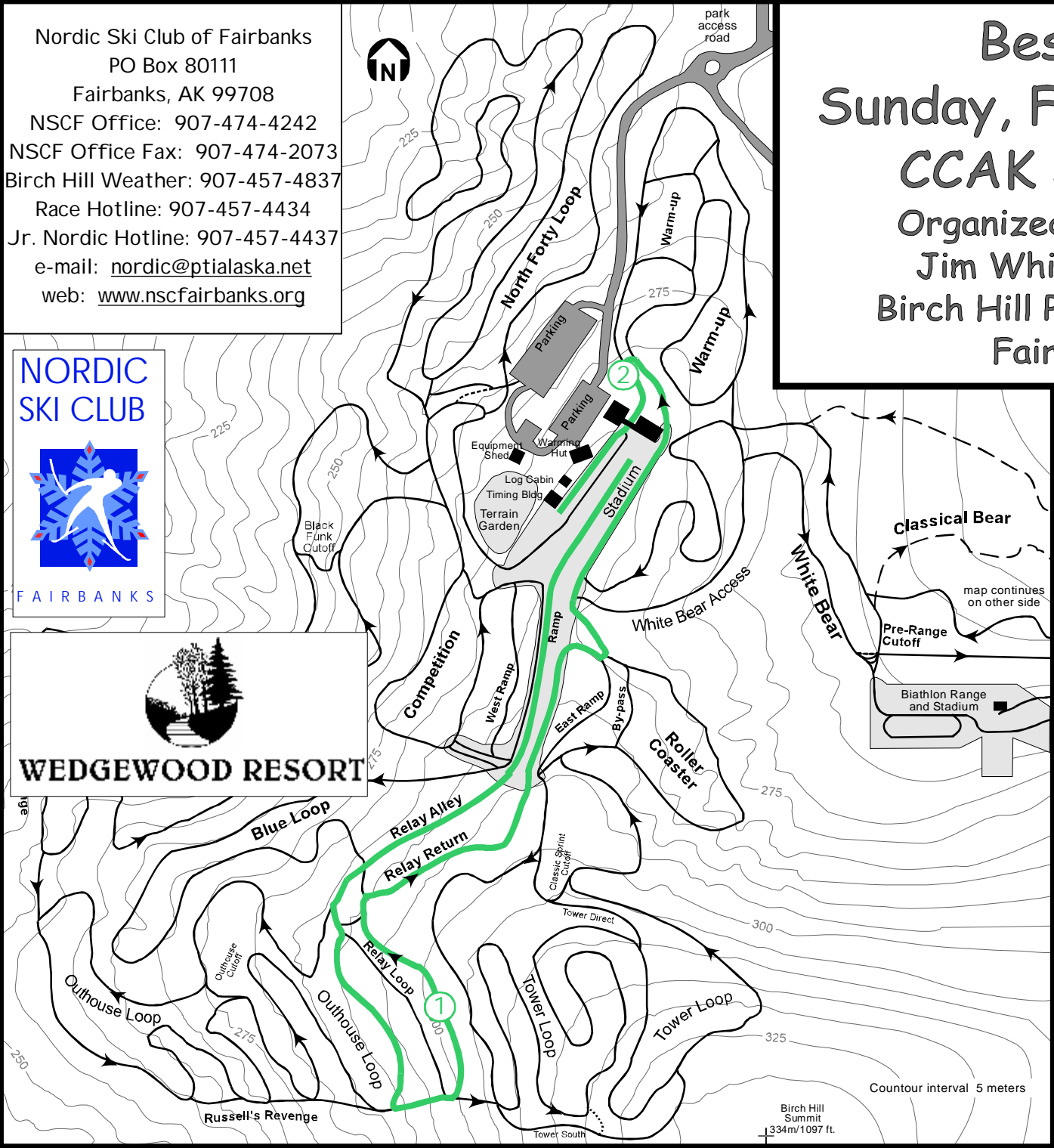


Nordic Ski Club of Fairbanks
 PO Box 80111
 Fairbanks, AK 99708
 NSCF Office: 907-474-4242
 NSCF Office Fax: 907-474-2073
 Birch Hill Weather: 907-457-4837
 Race Hotline: 907-457-4434
 Jr. Nordic Hotline: 907-457-4437
 e-mail: nordic@ptialaska.net
 web: www.nscfairbanks.org



Besh Cup #6

Sunday, February 7, 2010

CCAK JO Qualifier

Organized by NSC Fairbanks
 Jim Whisenant Ski Trails
 Birch Hill Park Recreation Area
 Fairbanks, Alaska

J5 & J4 Boys & Girls 2km
 Classic Technique
 Mass Start
 Green Course

Technical Information:
 Measured Length: 2189m
 Height Difference (HD): 24m
 Total Climb (TC): 50m
 Maximum Climb (MC): 14m
 Climb per Km: 22.8m/km

Competition Committee:
 Technical Delegate: Lin Hinderman
 Chief of Competition: John Estle
 Chief of Secretariat: tba
 Chief of Course: Tom Helmers
 Assistant Chief of Course: Bill Husby
 Chiefs of Stadium: Bob Wilkinson,
 Dave Murray, Susan Faulkner
 Chief of Timing: Carol Haas
 Chief of Competition Control: Byron & Chris Broda
 Chief of Athlete Care: tba