

Nordic Ski Club of Fairbanks
 PO Box 80111
 Fairbanks, AK 99708
 NSCF Office: 907-474-4242
 NSCF Office Fax: 907-474-2073
 Birch Hill Weather: 907-457-4837
 Race Hotline: 907-457-4434
 Jr. Nordic Hotline: 907-457-4437
 e-mail: nordic@ptialaska.net
 web: www.nscfairbanks.org

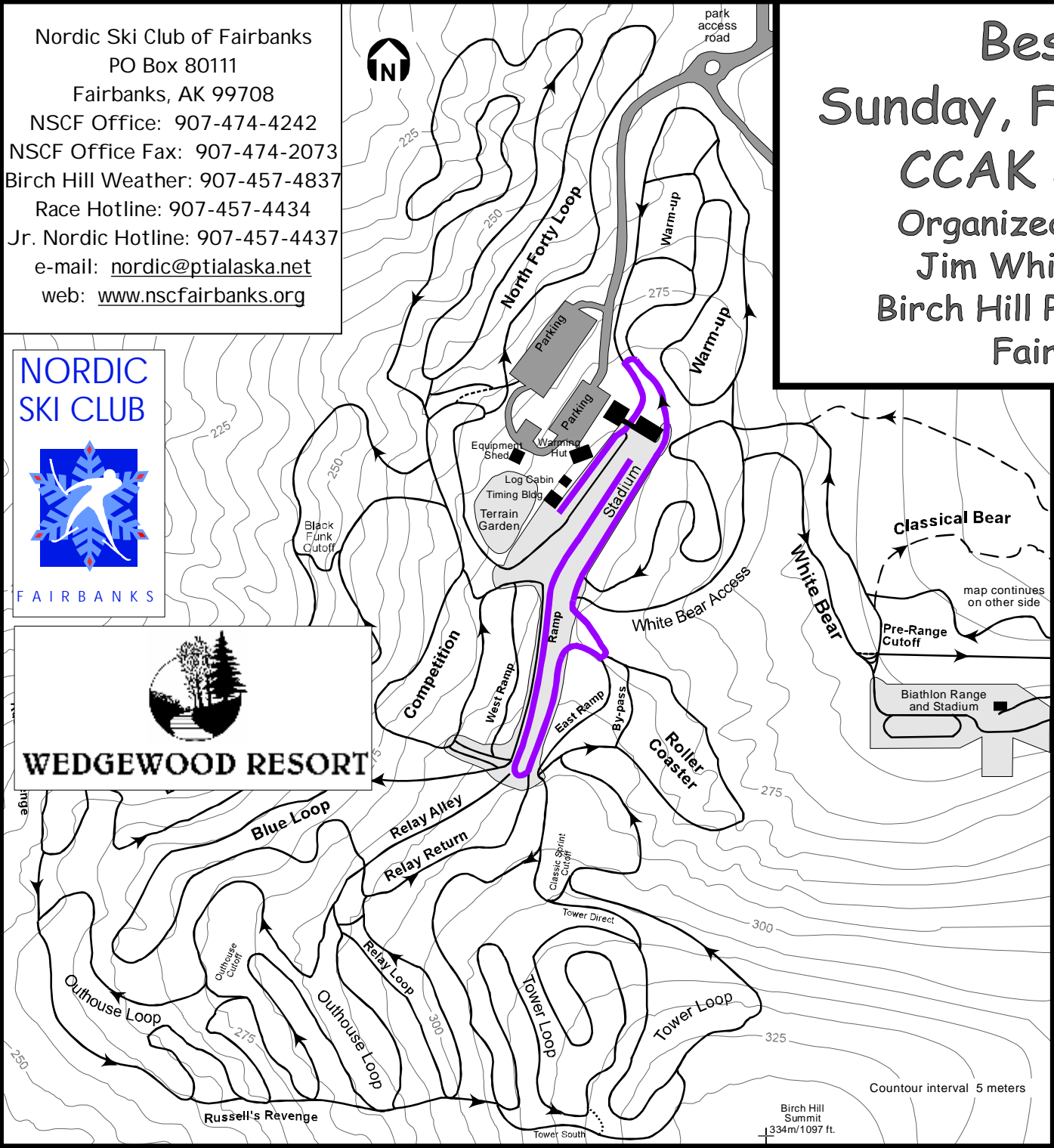


Besh Cup #6

Sunday, February 7, 2010

CCAK JO Qualifier

Organized by NSC Fairbanks
 Jim Whisenant Ski Trails
 Birch Hill Park Recreation Area
 Fairbanks, Alaska



J6 Boys and Girls 1km
 Classic Technique
 Mass Start
 Violet Course

Technical Information:
 Measured Length: 1142m
 Height Difference (HD): 15m
 Total Climb (TC): 17m
 Maximum Climb (MC): 10m
 Climb per Km: 15.2m/km

Competition Committee:
 Technical Delegate: Lin Hinderman
 Chief of Competition: John Estle
 Chief of Secretariat: tba
 Chief of Course: Tom Helmers
 Assistant Chief of Course: Bill Husby
 Chiefs of Stadium: Bob Wilkinson,
 Dave Murray, Susan Faulkner
 Chief of Timing: Carol Haas
 Chief of Competition Control: Byron & Chris Broda
 Chief of Athlete Care: tba