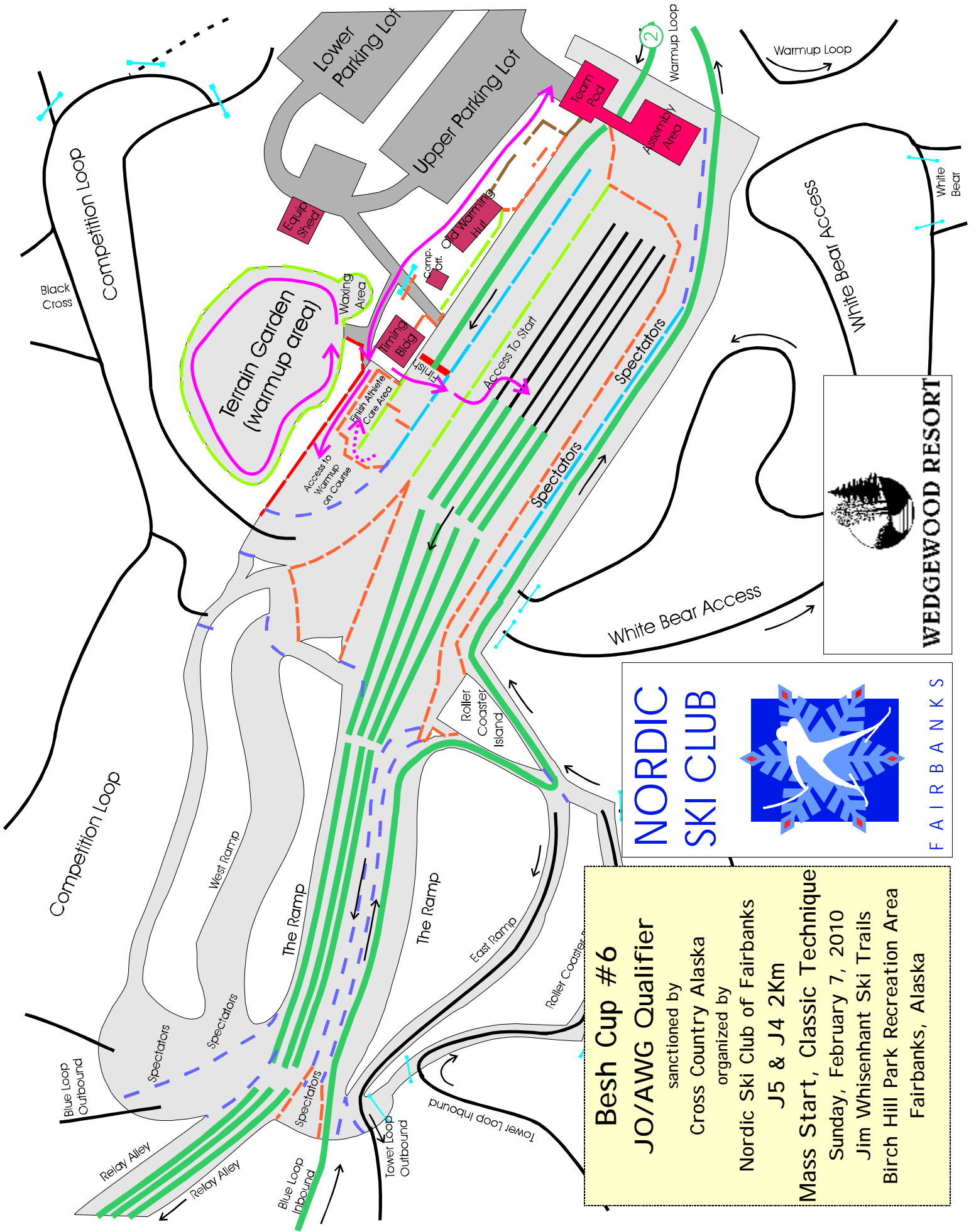


Besh Cup #6
 JO/AWG Qualifier
 sanctioned by
 Cross Country Alaska
 organized by
 Nordic Ski Club of Fairbanks
J6 1Km
Mass Start, Classic Technique
 Sunday, February 7, 2010
 Jim Whisenant Ski Trails
 Birch Hill Park Recreation Area
 Fairbanks, Alaska



Besh Cup #6
 JO/AWG Qualifier
 sanctioned by
 Cross Country Alaska
 organized by
 Nordic Ski Club of Fairbanks
 J5 & J4 2Km
 Mass Start, Classic Technique
 Sunday, February 7, 2010
 Jim Whisenant Ski Trails
 Birch Hill Park Recreation Area
 Fairbanks, Alaska

Besh Cup #6

Sunday, February 7, 2010

CCAK JO Qualifier

Organized by NSC Fairbanks
 Jim Whisenant Ski Trails
 Birch Hill Park Recreation Area
 Fairbanks, Alaska

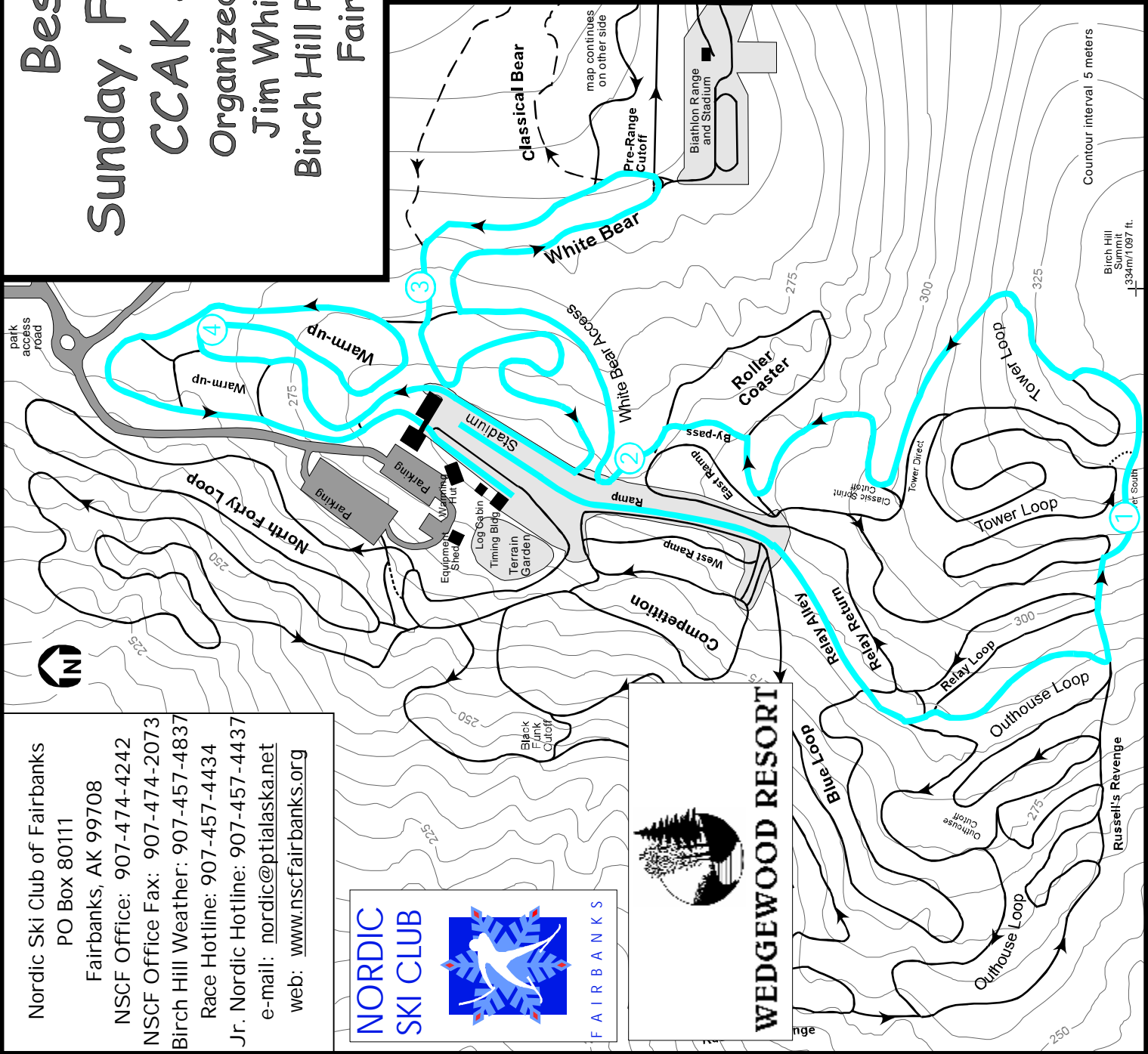
J3&J2 Boys and Girls 5Km
 Classic Technique
 Mass Start
 Blue Course

Technical Information:

Measured Length: 5148m
 Height Difference (HD): 73m
 Total Climb (TC): 162m
 Maximum Climb (MC): 54m
 Climb per Km: 31.4m/Km

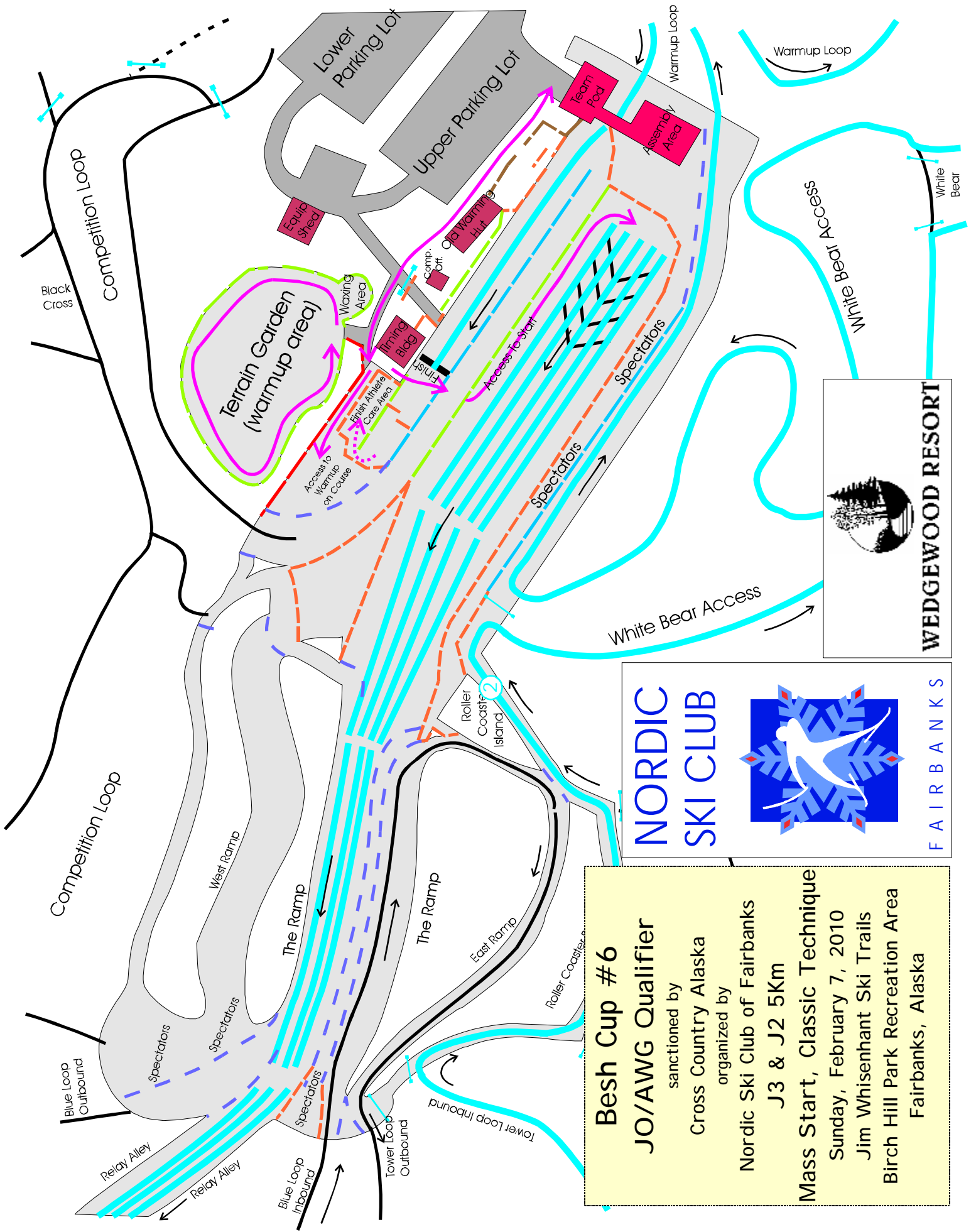
Competition Committee:

Technical Delegate: Lin Hinderman
 Chief of Competition: John Estle
 Chief of Secretariat: tba
 Chief of Course: Tom Helmers
 Assistant Chief of Course: Bill Husby
 Chiefs of Stadium: Bob Wilkinson,
 Dave Murray, Susan Faulkner
 Chief of Timing: Carol Haas
 Chief of Competition Control: Byron & Chris Broda
 Chief of Athlete Care: tba



Nordic Ski Club of Fairbanks
 PO Box 80111
 Fairbanks, AK 99708
 NSCF Office: 907-474-4242
 NSCF Office Fax: 907-474-2073
 Birch Hill Weather: 907-457-4837
 Race Hotline: 907-457-4434
 Jr. Nordic Hotline: 907-457-4437
 e-mail: nordic@ptialaska.net
 web: www.nscfairbanks.org



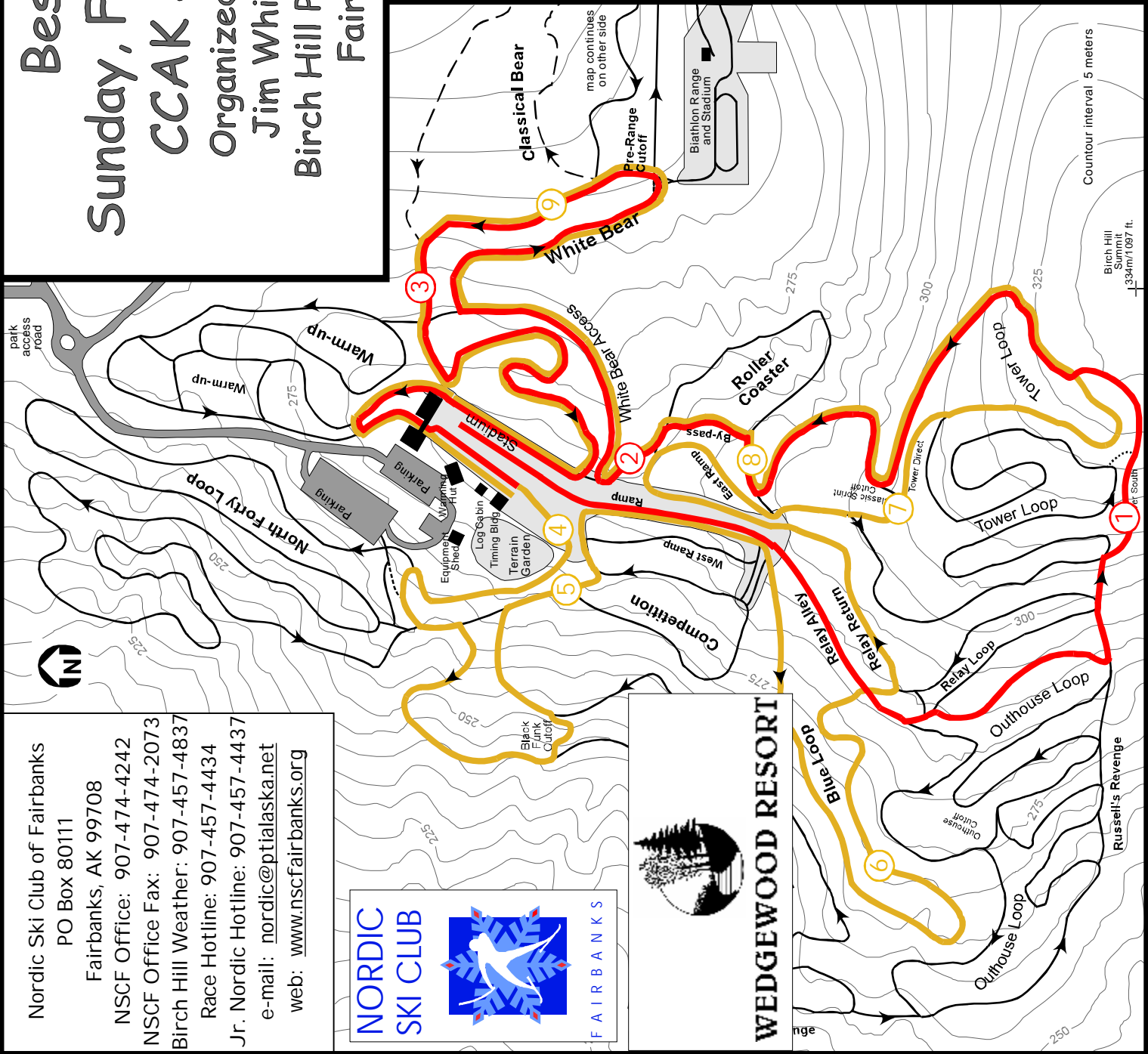


Besh Cup #6
 JO/AWG Qualifier
 sanctioned by
 Cross Country Alaska
 organized by
 Nordic Ski Club of Fairbanks
 J3 & J2 5Km
Mass Start, Classic Technique
 Sunday, February 7, 2010
 Jim Whisenant Ski Trails
 Birch Hill Park Recreation Area
 Fairbanks, Alaska

Nordic Ski Club of Fairbanks
 PO Box 80111
 Fairbanks, AK 99708
 NSCF Office: 907-474-4242
 NSCF Office Fax: 907-474-2073
 Birch Hill Weather: 907-457-4837
 Race Hotline: 907-457-4434
 Jr. Nordic Hotline: 907-457-4437
 e-mail: nordic@ptialaska.net
 web: www.nscfairbanks.org



WEDGEWOOD RESORT



Besh Cup #6

Sunday, February 7, 2010

CCAK JO Qualifier

Organized by NSC Fairbanks
 Jim Whisenant Ski Trails
 Birch Hill Park Recreation Area
 Fairbanks, Alaska

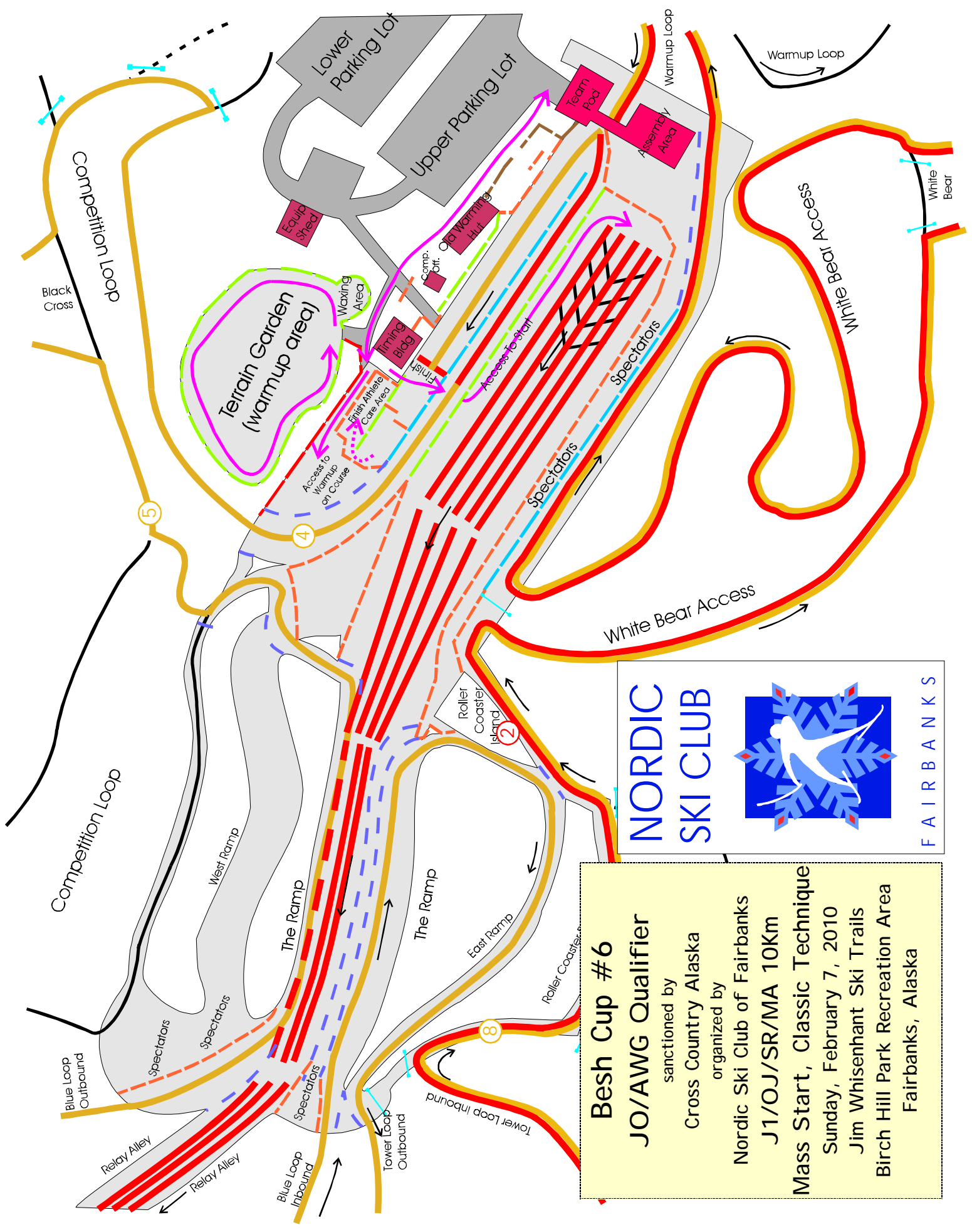
J1-OJ-SR-MA M&F 10Km
 Mass-Start Classic Technique
Red Course (lap 1) &
Gold Course (lap 2)

Technical Information:

Measured Length: 10104m
 Height Difference (HD): 89m
 Total Climb (TC): 355m
 Maximum Climb (MC): 54m
 Climb per Km: 35.2m/km

Competition Committee:

Technical Delegate: Lin Hinderman
 Chief of Competition: John Estle
 Chief of Secretariat: tba
 Chief of Course: Tom Helmers
 Assistant Chief of Course: Bill Husby
 Chiefs of Stadium: Bob Wilkinson,
 Dave Murray, Susan Faulkner
 Chief of Timing: Carol Haas
 Chief of Competition Control: Byron & Chris Broda
 Chief of Athlete Care: tba



Besh Cup #6
JO/AWG Qualifier
 sanctioned by
 Cross Country Alaska
 organized by
 Nordic Ski Club of Fairbanks
J1/OJ/SR/MA 10Km
Mass Start, Classic Technique
 Sunday, February 7, 2010
 Jim Whisenant Ski Trails
 Birch Hill Park Recreation Area
 Fairbanks, Alaska

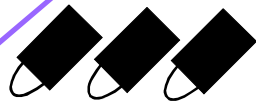
NORDIC
SKI CLUB

FAIRBANKS

Mass-Start Setup - Large Field

Multi-Lap

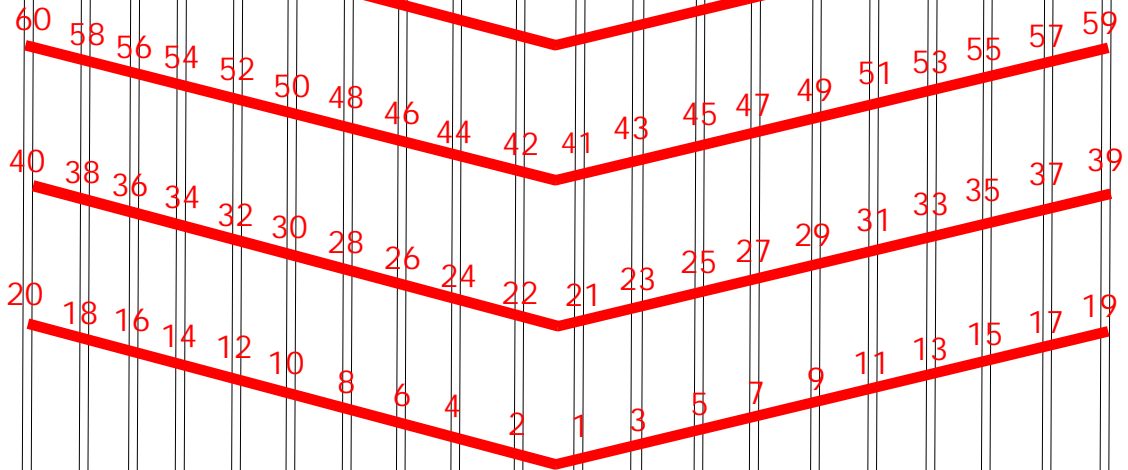
Spectator Area



3 Black Sleds for Clothing

Clothing Bag Service

Continue Numbering to Largest Field Size



2m

2m

Lap Lane During Race

Competitor Entrance

Spectator Corridor

Swing Tommy Fence Out of the way between starts so Racers can ski through

Use Rope to Block off Start Arcs during Kids' Races

Mass-Start Area
20 tracks,
1.5m on center
(28.5m width)
Chevron
configuration;
1m setbacks;
Even and odd
numbers as
pictured;
Numbered cards
mark start
positions

Pin Flags at Kids Start Line

Elementary and Middle School
or J6-J5-J4 Start Line

Pin Flags at End of Tracks - Tracks End Square, not in an Arrowhead/Chevron

Start Mesa and Lap/Finish Area Setup - Multi Lap

Mass Start / Classic Technique

