

Besh Cup #6

Sunday, February 7, 2010

CCAK JO Qualifier

Organized by NSC Fairbanks
 Jim Whisenant Ski Trails
 Birch Hill Park Recreation Area
 Fairbanks, Alaska

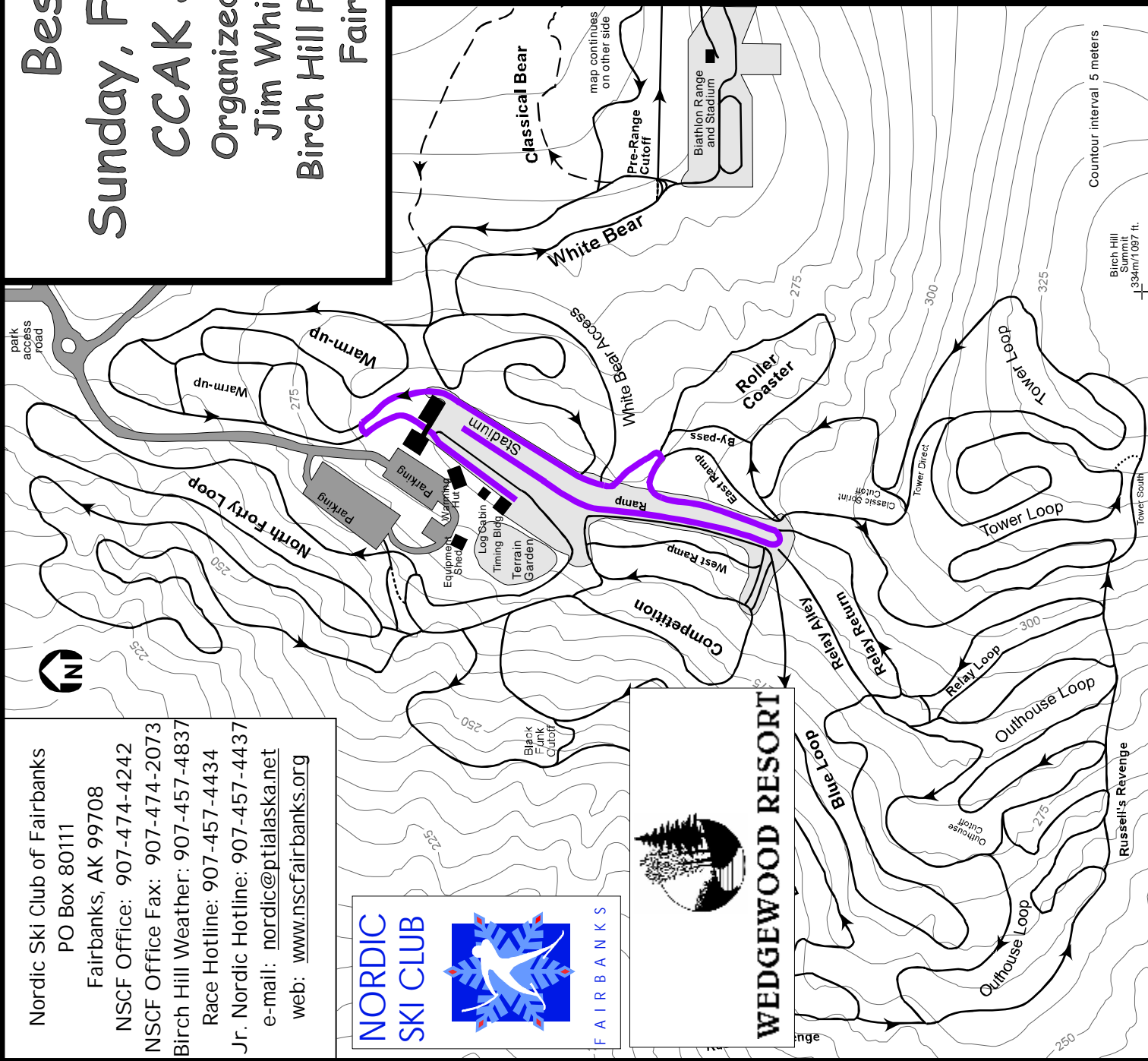
J6 Boys and Girls 1km
 Classic Technique
 Mass Start
 Violet Course

Technical Information:

Measured Length: 1142m
 Height Difference (HD): 15m
 Total Climb (TC): 17m
 Maximum Climb (MC): 10m
 Climb per Km: 15.2m/km

Competition Committee:

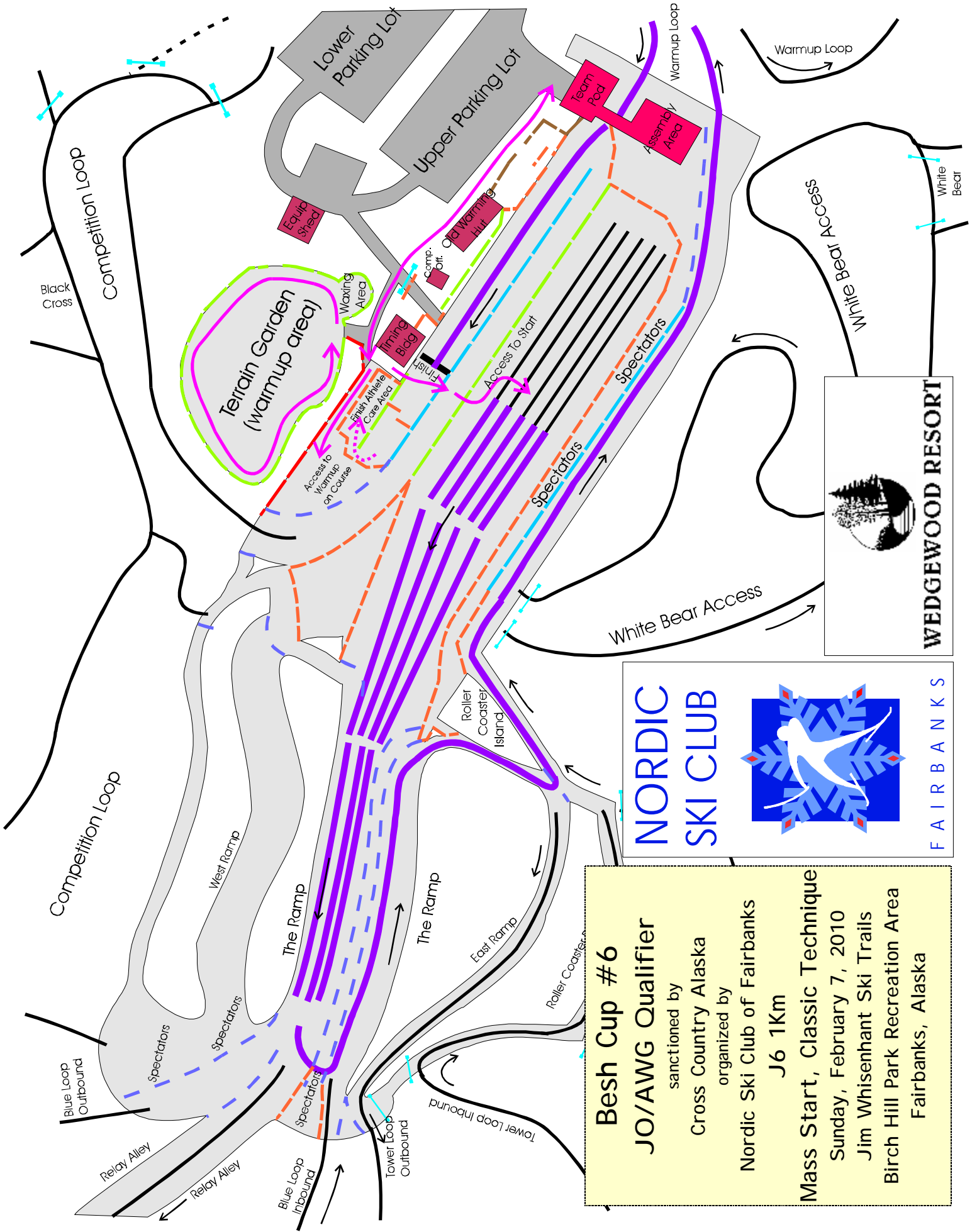
Technical Delegate: Lin Hinderman
 Chief of Competition: John Estle
 Chief of Secretariat: tba
 Chief of Course: Tom Helmers
 Assistant Chief of Course: Bill Husby
 Chiefs of Stadium: Bob Wilkinson,
 Dave Murray, Susan Faulkner
 Chief of Timing: Carol Haas
 Chief of Competition Control: Byron & Chris Broda
 Chief of Athlete Care: tba



Nordic Ski Club of Fairbanks
 PO Box 80111
 Fairbanks, AK 99708
 NSCF Office: 907-474-4242
 NSCF Office Fax: 907-474-2073
 Birch Hill Weather: 907-457-4837
 Race Hotline: 907-457-4434
 Jr. Nordic Hotline: 907-457-4437
 e-mail: nordic@ptialaska.net
 web: www.nscfairbanks.org



WEDGEWOOD RESORT



Besh Cup #6
 JO/AWG Qualifier
 sanctioned by
 Cross Country Alaska
 organized by
 Nordic Ski Club of Fairbanks
 J6 1Km
 Mass Start, Classic Technique
 Sunday, February 7, 2010
 Jim Whisenant Ski Trails
 Birch Hill Park Recreation Area
 Fairbanks, Alaska

2/1/2010

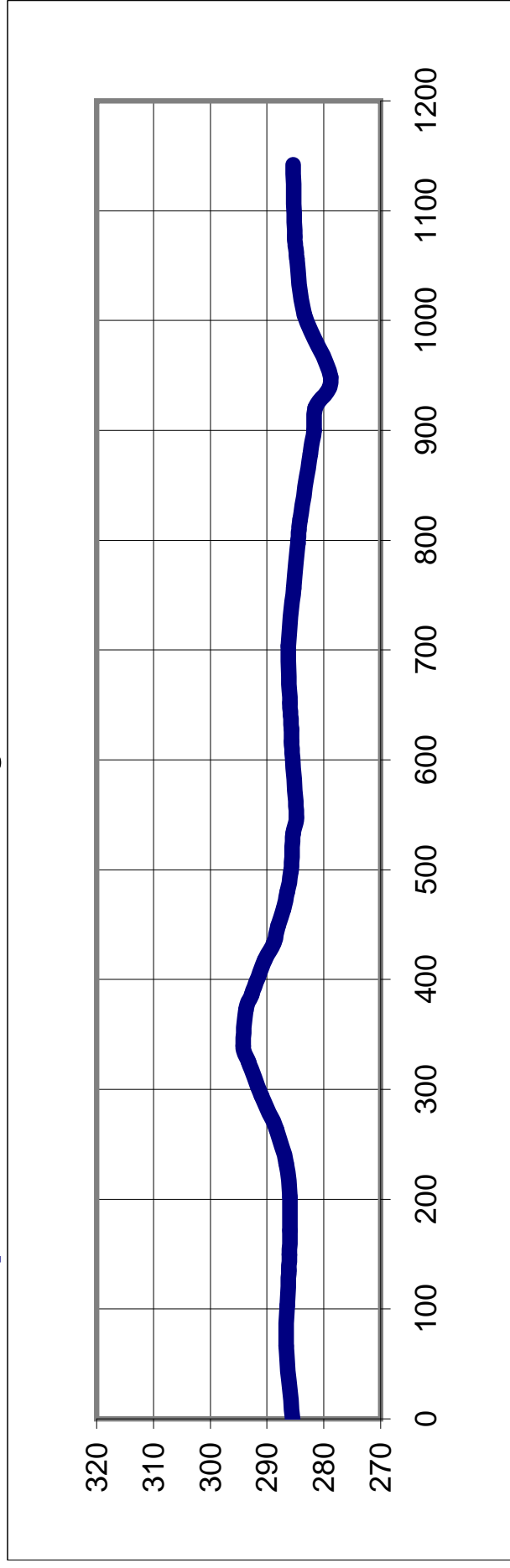
9:11 AM

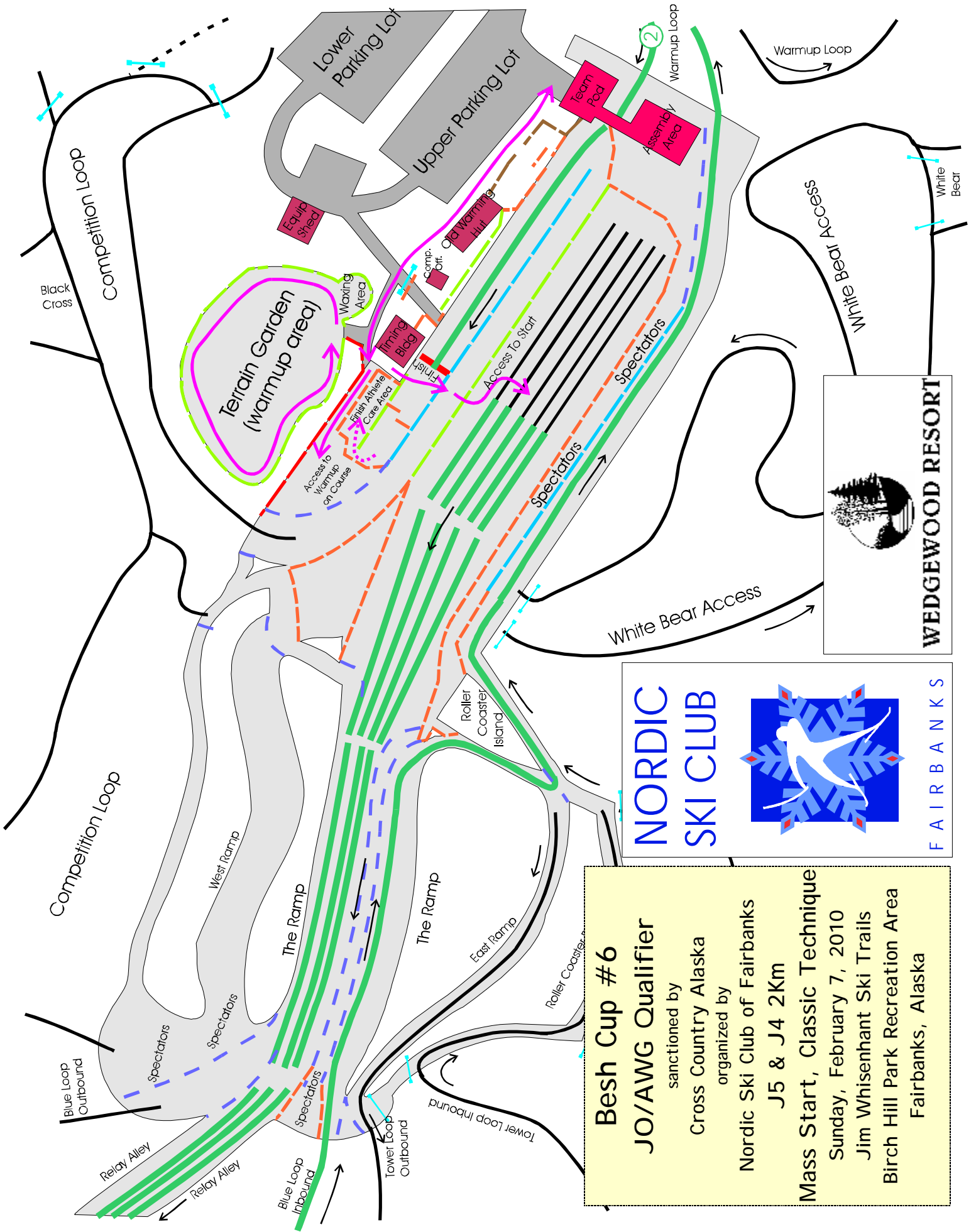
J6 Boys & Girls 1km Classic Technique

Measured Length 1142 m **Height Difference (HD):** 15 m
High Point 294 m **Total Climb (TC):** 17 m
Low Point 279 m **Maximum Climb (MC):** 10 m

FIS Spec Ranges: HD:30m, MC:60m, TC min:0m/TC max:60m

Climb per km: 15.2m - FIS range climb/km: 0.0m - 60.0m





Besh Cup #6
 JO/AWG Qualifier
 sanctioned by
 Cross Country Alaska
 organized by
 Nordic Ski Club of Fairbanks
 J5 & J4 2Km
Mass Start, Classic Technique
 Sunday, February 7, 2010
 Jim Whisenant Ski Trails
 Birch Hill Park Recreation Area
 Fairbanks, Alaska

NORDIC SKI CLUB FAIRBANKS

WEDGEWOOD RESORT

2/1/2010

9:11 AM

J5 & J4 Boys & Girls 2km Classic Technique

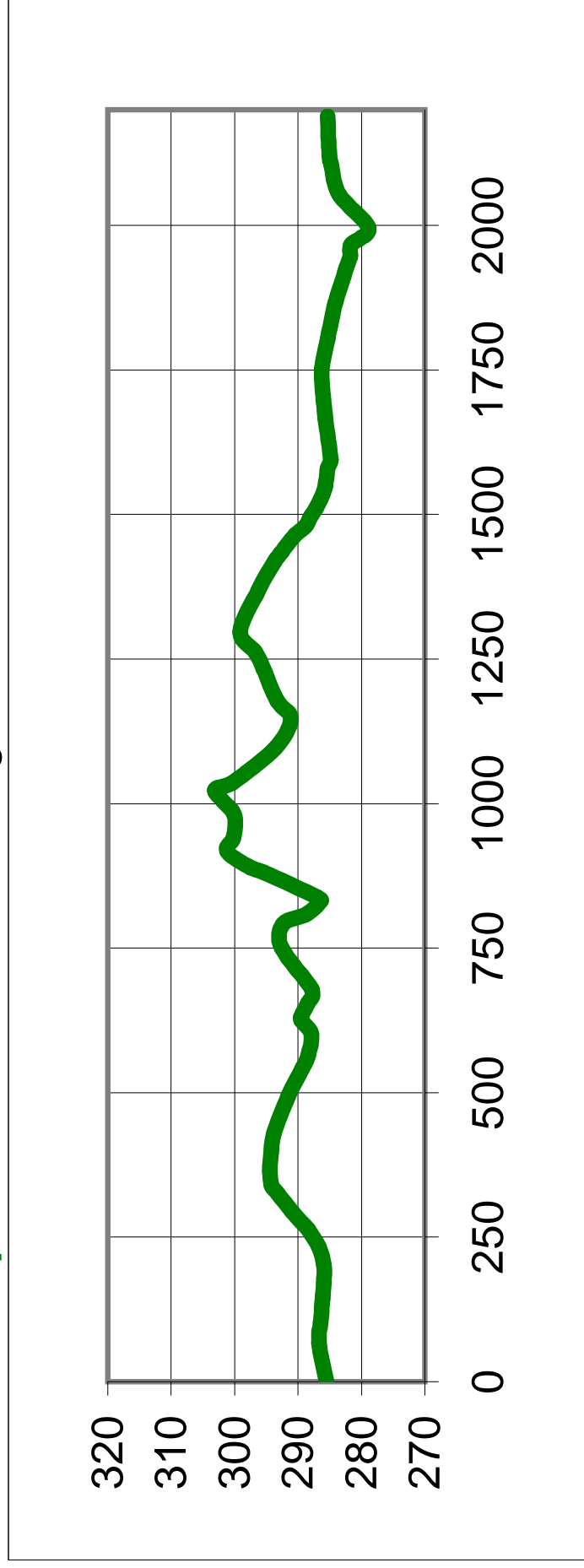
Measured Length 2189 m **Height Difference (HD):** 24 m

High Point 303 m **Total Climb (TC):** 50 m

Low Point 279 m **Maximum Climb (MC):** 14 m

FIS Spec Ranges: HD:30m, MC:60m, TC min:0m/TC max:60m

Climb per km: 22.8m - FIS range climb/km: 0.0m - 60.0m



Besh Cup #6

Sunday, February 7, 2010

CCAK JO Qualifier

Organized by NSC Fairbanks
 Jim Whisenant Ski Trails
 Birch Hill Park Recreation Area
 Fairbanks, Alaska

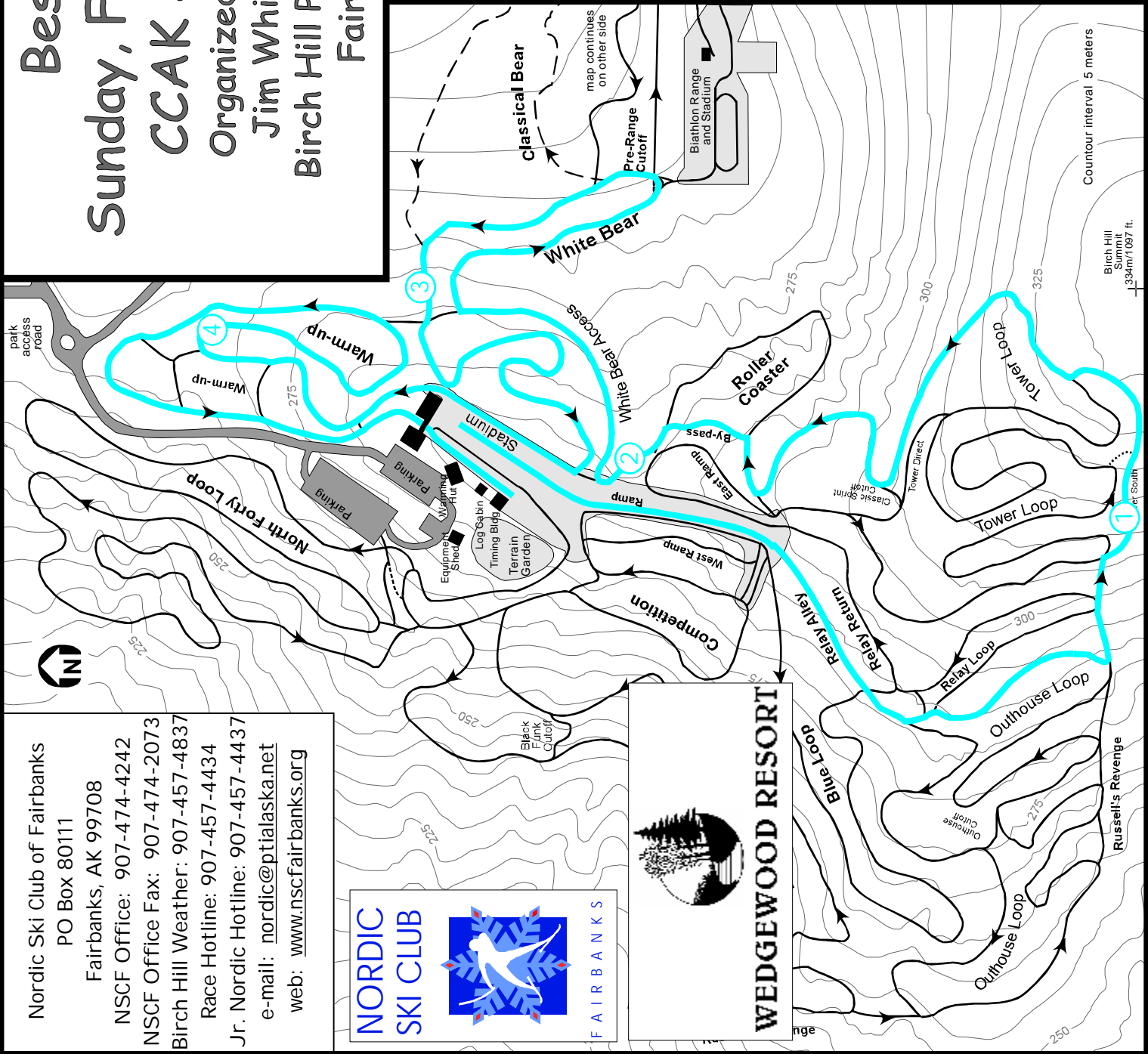
J3&J2 Boys and Girls 5Km
 Classic Technique
 Mass Start
 Blue Course

Technical Information:

Measured Length: 5148m
 Height Difference (HD): 73m
 Total Climb (TC): 162m
 Maximum Climb (MC): 54m
 Climb per Km: 31.4m/Km

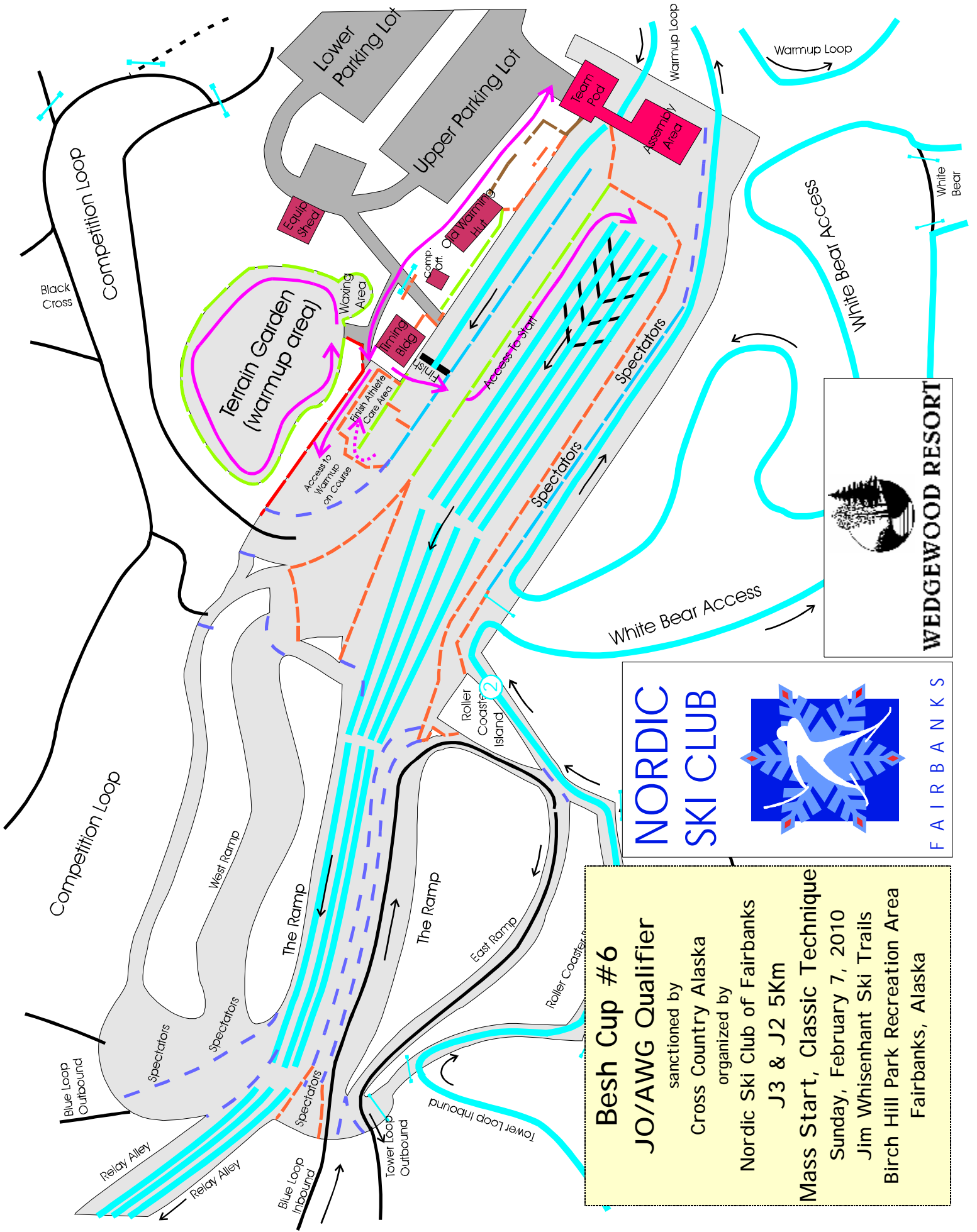
Competition Committee:

Technical Delegate: Lin Hinderman
 Chief of Competition: John Estle
 Chief of Secretariat: tba
 Chief of Course: Tom Helmers
 Assistant Chief of Course: Bill Husby
 Chiefs of Stadium: Bob Wilkinson,
 Dave Murray, Susan Faulkner
 Chief of Timing: Carol Haas
 Chief of Competition Control: Byron & Chris Broda
 Chief of Athlete Care: tba



Nordic Ski Club of Fairbanks
 PO Box 80111
 Fairbanks, AK 99708
 NSCF Office: 907-474-4242
 NSCF Office Fax: 907-474-2073
 Birch Hill Weather: 907-457-4837
 Race Hotline: 907-457-4434
 Jr. Nordic Hotline: 907-457-4437
 e-mail: nordic@ptialaska.net
 web: www.nscfairbanks.org





NORDIC SKI CLUB

F A I R B A N K S

Besh Cup #6
 JO/AWG Qualifier
 sanctioned by
 Cross Country Alaska
 organized by
 Nordic Ski Club of Fairbanks
 J3 & J2 5Km
Mass Start, Classic Technique
 Sunday, February 7, 2010
 Jim Whisenant Ski Trails
 Birch Hill Park Recreation Area
 Fairbanks, Alaska

2/1/2010

9:11 AM

J3 & J2 Boys & Girls 5km Classic Technique

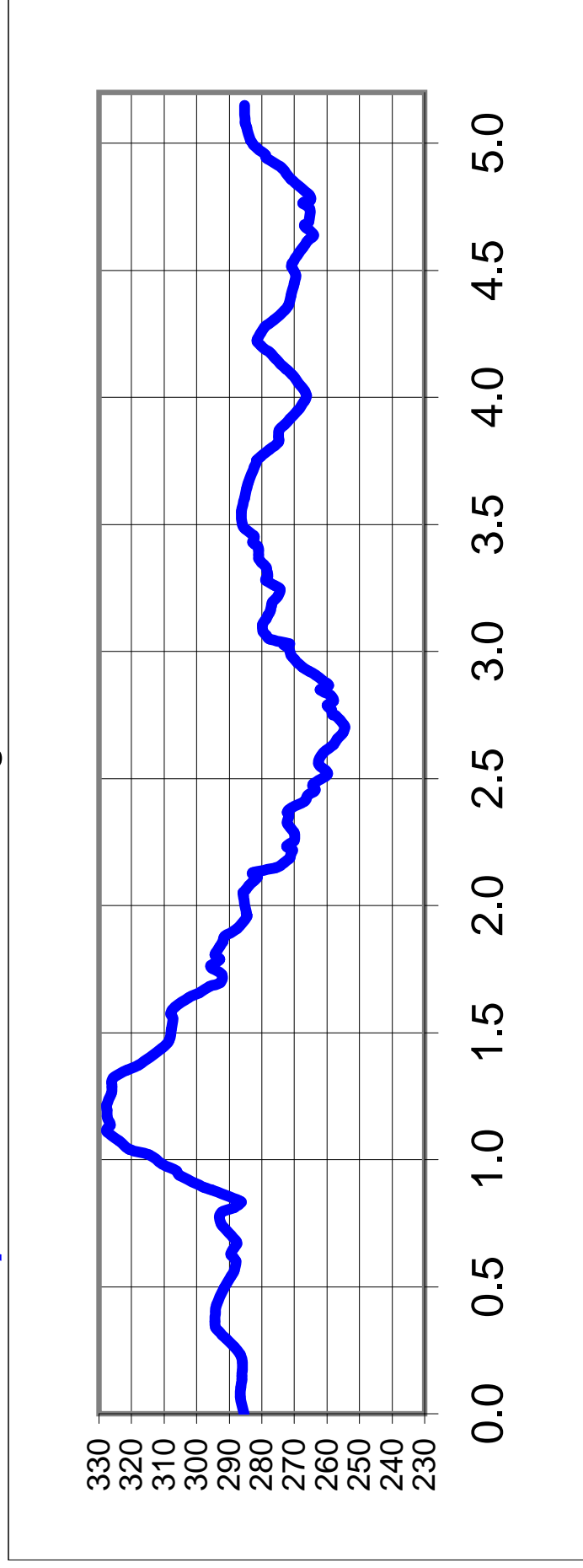
Measured Length 5148 m **Height Difference (HD):** 73 m

High Point 328 m **Total Climb (TC):** 162 m

Low Point 254 m **Maximum Climb (MC):** 54 m

FIS Spec Ranges: HD:100m, MC:50m, TC min:150m/TC max:210m

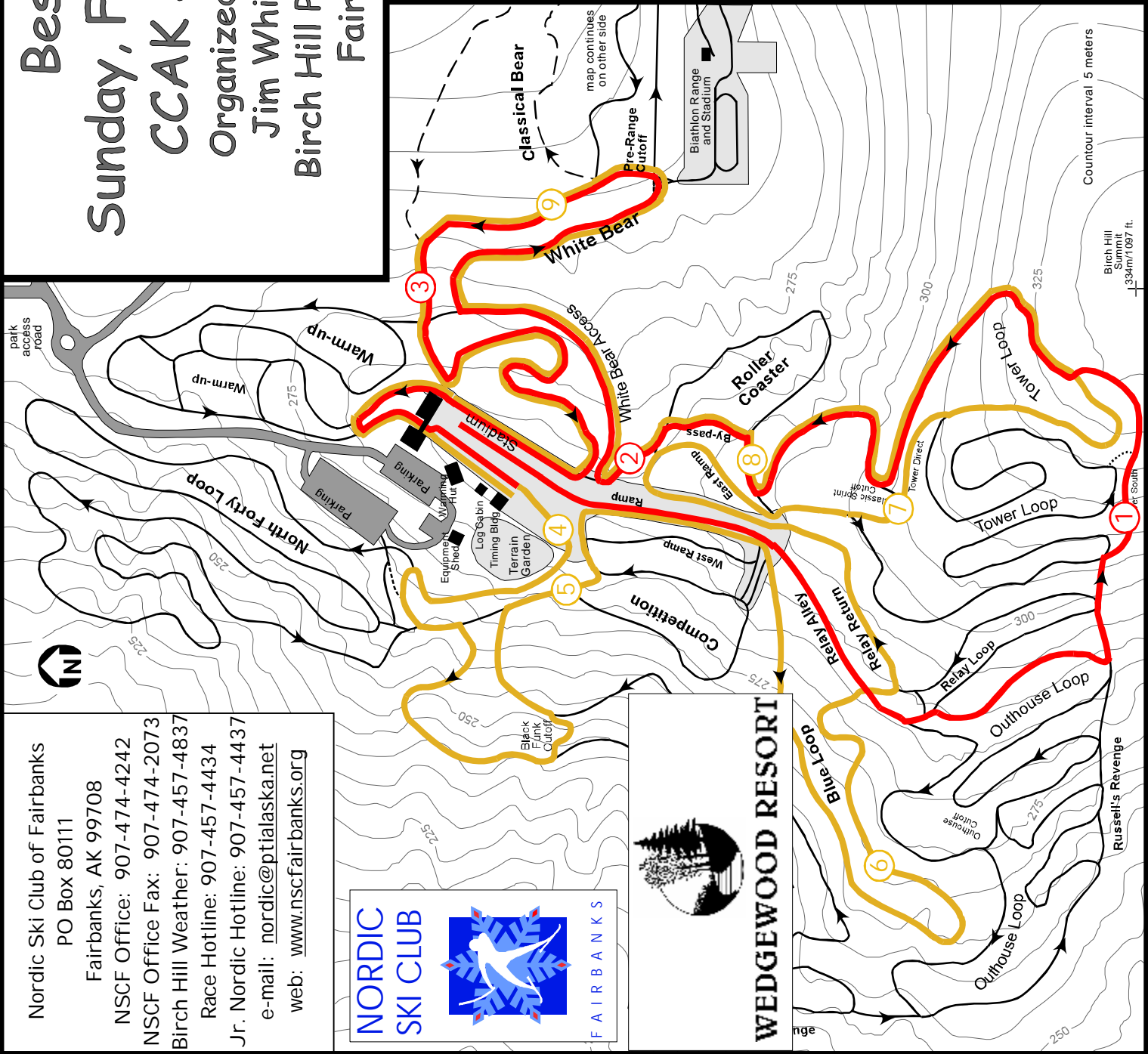
Climb per km: 31.4m - FIS range climb/km: 30.0m - 42.0m



Nordic Ski Club of Fairbanks
 PO Box 80111
 Fairbanks, AK 99708
 NSCF Office: 907-474-4242
 NSCF Office Fax: 907-474-2073
 Birch Hill Weather: 907-457-4837
 Race Hotline: 907-457-4434
 Jr. Nordic Hotline: 907-457-4437
 e-mail: nordic@ptialaska.net
 web: www.nscfairbanks.org



WEDGEWOOD RESORT



Besh Cup #6

Sunday, February 7, 2010

CCAK JO Qualifier

Organized by NSC Fairbanks
 Jim Whisenant Ski Trails
 Birch Hill Park Recreation Area
 Fairbanks, Alaska

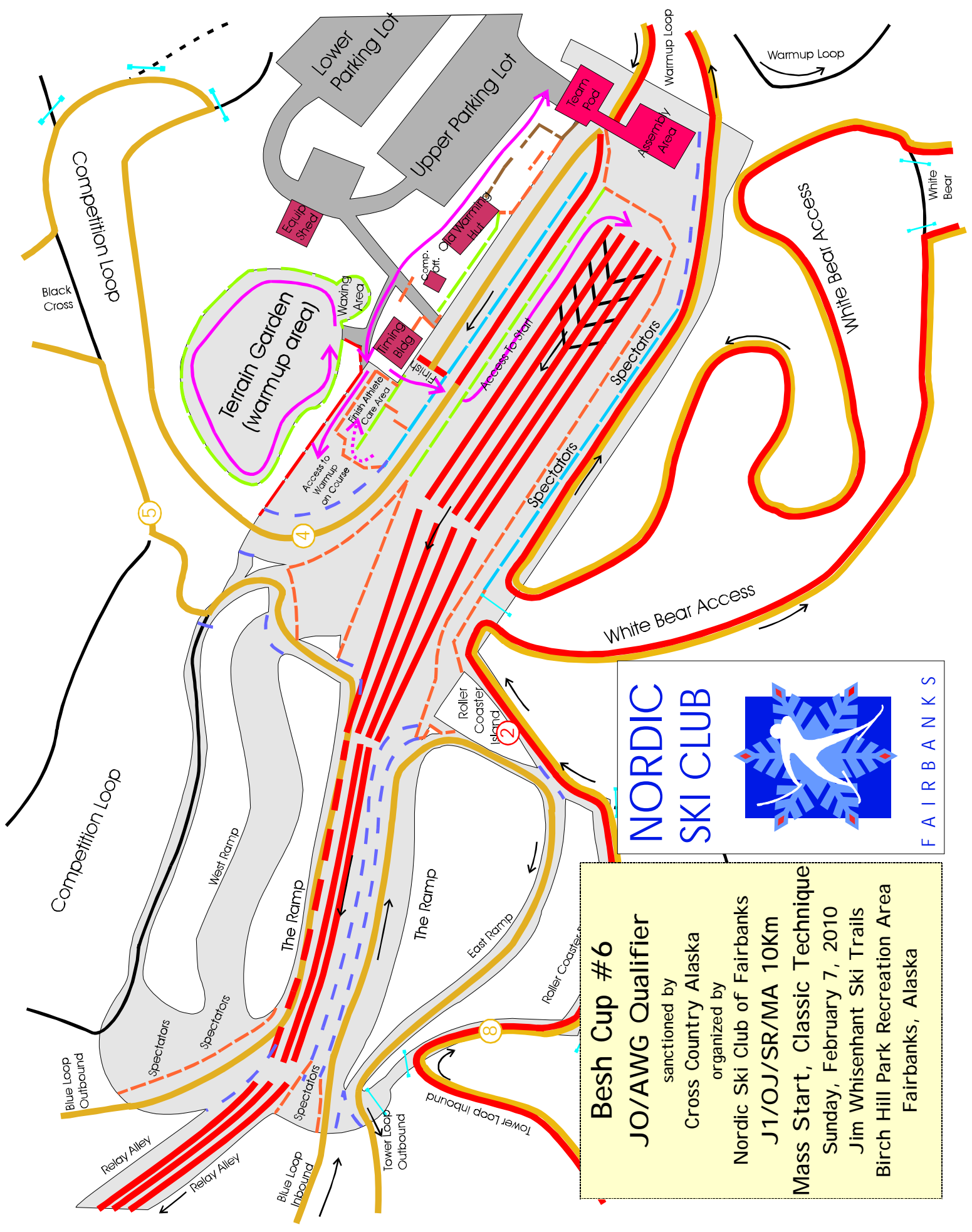
J1-OJ-SR-MA M&F 10Km
 Mass-Start Classic Technique
Red Course (lap 1) &
Gold Course (lap 2)

Technical Information:

Measured Length: 10104m
 Height Difference (HD): 89m
 Total Climb (TC): 355m
 Maximum Climb (MC): 54m
 Climb per Km: 35.2m/km

Competition Committee:

Technical Delegate: Lin Hinderman
 Chief of Competition: John Estle
 Chief of Secretariat: tba
 Chief of Course: Tom Helmers
 Assistant Chief of Course: Bill Husby
 Chiefs of Stadium: Bob Wilkinson,
 Dave Murray, Susan Faulkner
 Chief of Timing: Carol Haas
 Chief of Competition Control: Byron & Chris Broda
 Chief of Athlete Care: tba



Besh Cup #6
JO/AWG Qualifier
 sanctioned by
 Cross Country Alaska
 organized by
 Nordic Ski Club of Fairbanks
J1/OJ/SR/MA 10Km
Mass Start, Classic Technique
 Sunday, February 7, 2010
 Jim Whisenant Ski Trails
 Birch Hill Park Recreation Area
 Fairbanks, Alaska

NORDIC
SKI CLUB

FAIRBANKS

2/1/2010

10:41 AM

J1/OJ/SR/MA M & F 10km Mass / Classic Technique

Measured Length 10104 m **Height Difference (HD):** 89 m
High Point 328 m **Total Climb (TC):** 355 m
Low Point 239 m **Maximum Climb (MC):** 54 m

FIS Spec Ranges: HD:150m, MC:80m, TC min:250m/TC max:400m

Climb per km: 35.2m - FIS range climb/km: 25.0m - 40.0m

