

Nordic Ski Club of Fairbanks
 PO Box 80111
 Fairbanks, AK 99708
 NSCF Office: 907-474-4242
 NSCF Office Fax: 907-474-2073
 Birch Hill Weather: 907-457-4837
 Race Hotline: 907-457-4434
 Jr. Nordic Hotline: 907-457-4437
 e-mail: nordic@ptialaska.net
 web: www.nscfairbanks.org

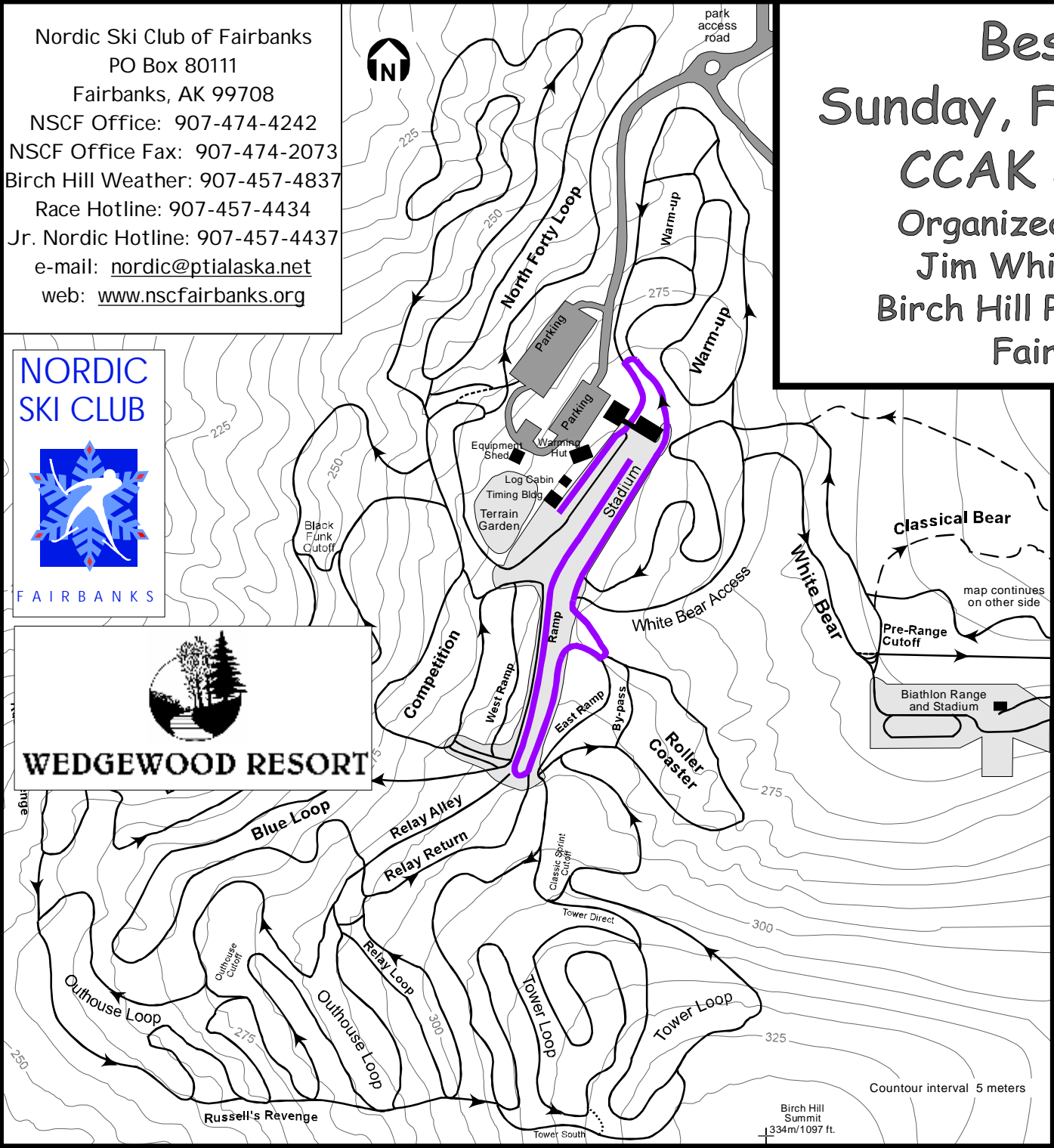


Besh Cup #6

Sunday, February 7, 2010

CCAK JO Qualifier

Organized by NSC Fairbanks
 Jim Whisenant Ski Trails
 Birch Hill Park Recreation Area
 Fairbanks, Alaska



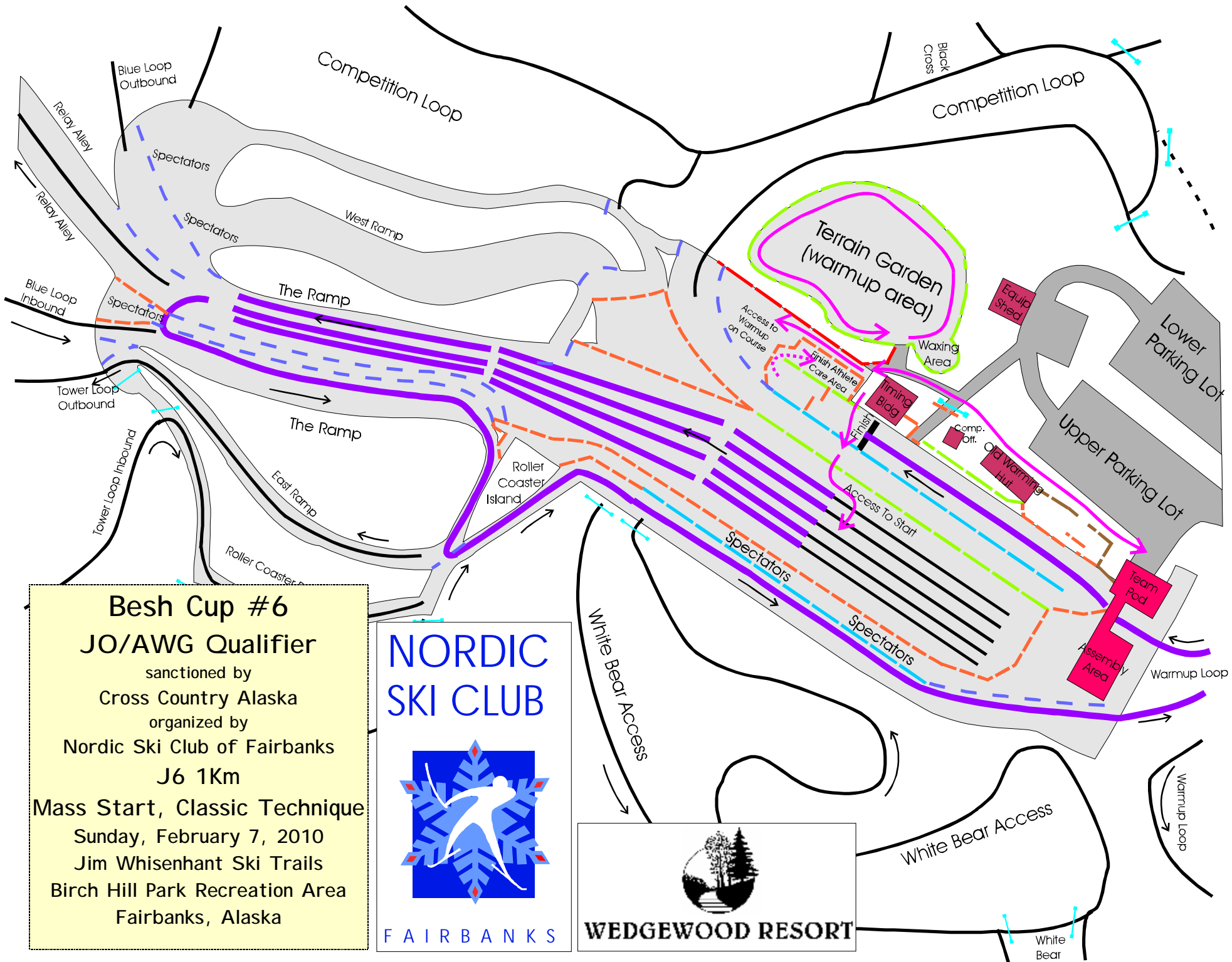
J6 Boys and Girls 1km
 Classic Technique
 Mass Start
 Violet Course

Technical Information:

- Measured Length: 1142m
- Height Difference (HD): 15m
- Total Climb (TC): 17m
- Maximum Climb (MC): 10m
- Climb per Km: 15.2m/km

Competition Committee:

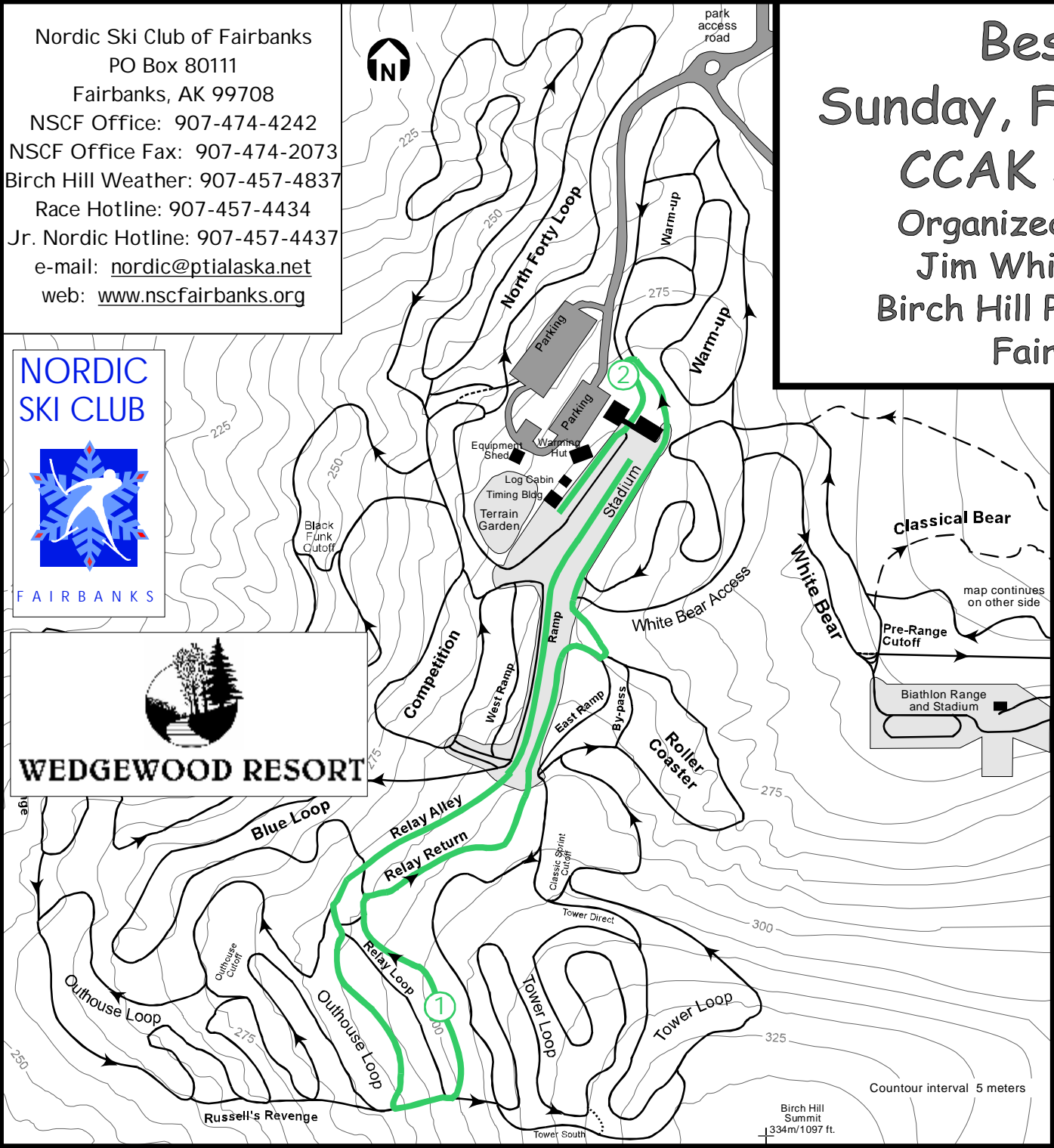
- Technical Delegate: Lin Hinderman
- Chief of Competition: John Estle
- Chief of Secretariat: tba
- Chief of Course: Tom Helmers
- Assistant Chief of Course: Bill Husby
- Chiefs of Stadium: Bob Wilkinson, Dave Murray, Susan Faulkner
- Chief of Timing: Carol Haas
- Chief of Competition Control: Byron & Chris Broda
- Chief of Athlete Care: tba



Besh Cup #6
JO/AWG Qualifier
 sanctioned by
 Cross Country Alaska
 organized by
 Nordic Ski Club of Fairbanks
J6 1Km
 Mass Start, Classic Technique
 Sunday, February 7, 2010
 Jim Whisenant Ski Trails
 Birch Hill Park Recreation Area
 Fairbanks, Alaska



Nordic Ski Club of Fairbanks
 PO Box 80111
 Fairbanks, AK 99708
 NSCF Office: 907-474-4242
 NSCF Office Fax: 907-474-2073
 Birch Hill Weather: 907-457-4837
 Race Hotline: 907-457-4434
 Jr. Nordic Hotline: 907-457-4437
 e-mail: nordic@ptialaska.net
 web: www.nscfairbanks.org



Besh Cup #6

Sunday, February 7, 2010

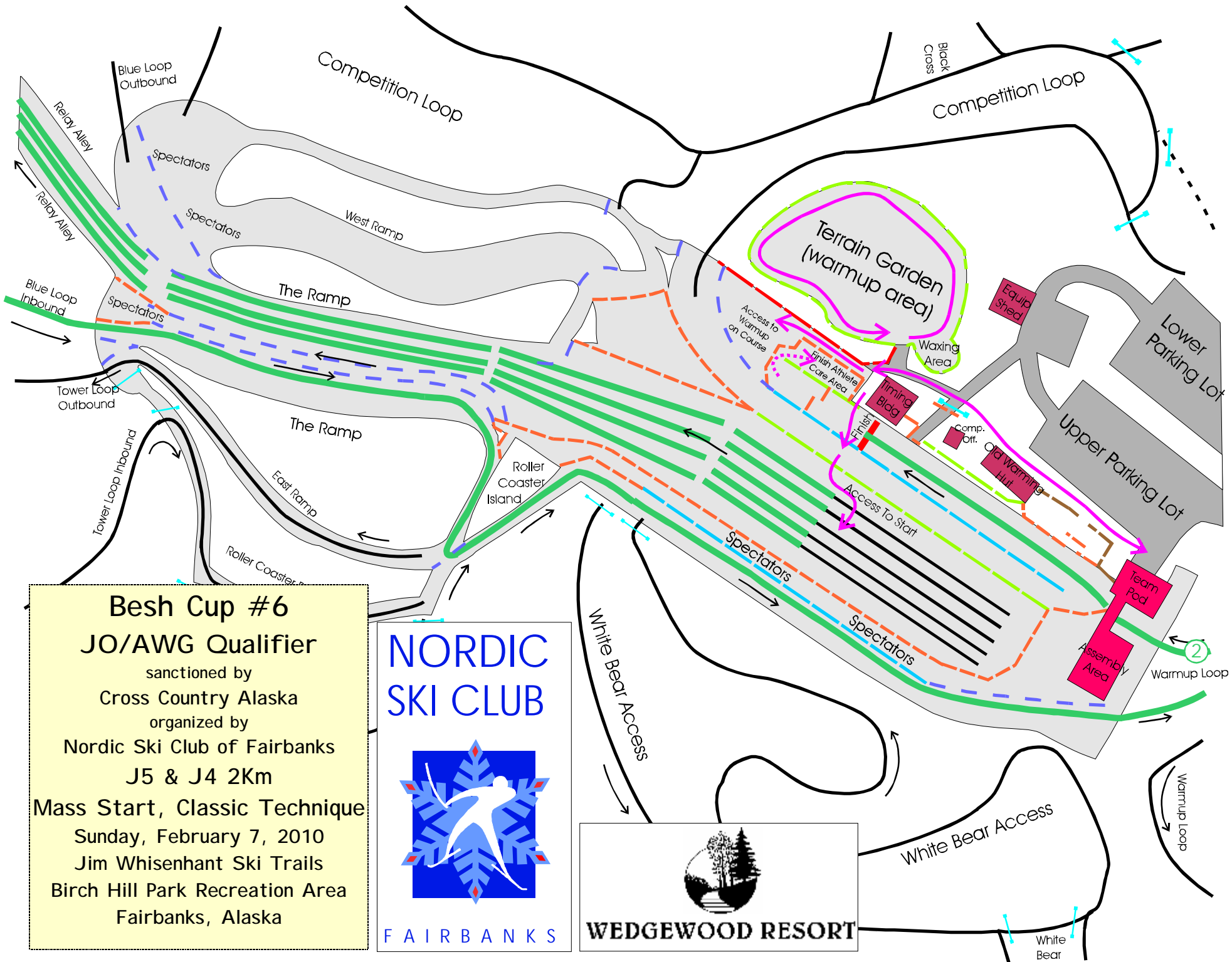
CCAK JO Qualifier

Organized by NSC Fairbanks
 Jim Whisenant Ski Trails
 Birch Hill Park Recreation Area
 Fairbanks, Alaska

J5 & J4 Boys & Girls 2km
 Classic Technique
 Mass Start
 Green Course

Technical Information:
 Measured Length: 2189m
 Height Difference (HD): 24m
 Total Climb (TC): 50m
 Maximum Climb (MC): 14m
 Climb per Km: 22.8m/km

Competition Committee:
 Technical Delegate: Lin Hinderman
 Chief of Competition: John Estle
 Chief of Secretariat: tba
 Chief of Course: Tom Helmers
 Assistant Chief of Course: Bill Husby
 Chiefs of Stadium: Bob Wilkinson,
 Dave Murray, Susan Faulkner
 Chief of Timing: Carol Haas
 Chief of Competition Control: Byron & Chris Broda
 Chief of Athlete Care: tba



Besh Cup #6
JO/AWG Qualifier
 sanctioned by
 Cross Country Alaska
 organized by
 Nordic Ski Club of Fairbanks
J5 & J4 2Km
 Mass Start, Classic Technique
 Sunday, February 7, 2010
 Jim Whisenant Ski Trails
 Birch Hill Park Recreation Area
 Fairbanks, Alaska

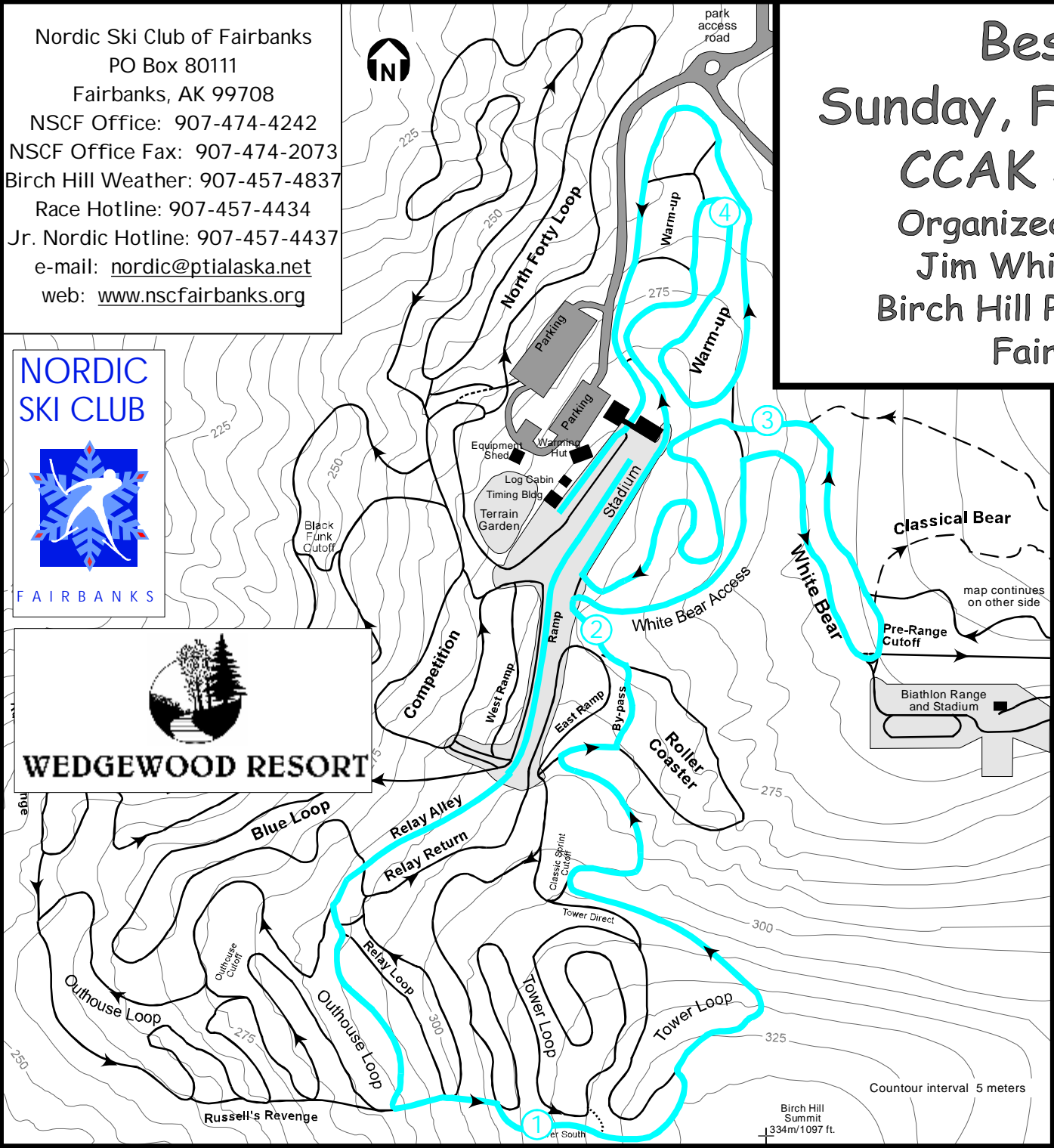
NORDIC SKI CLUB

FAIRBANKS

WEDGEWOOD RESORT

②

Nordic Ski Club of Fairbanks
 PO Box 80111
 Fairbanks, AK 99708
 NSCF Office: 907-474-4242
 NSCF Office Fax: 907-474-2073
 Birch Hill Weather: 907-457-4837
 Race Hotline: 907-457-4434
 Jr. Nordic Hotline: 907-457-4437
 e-mail: nordic@ptialaska.net
 web: www.nscfairbanks.org



Besh Cup #6

Sunday, February 7, 2010

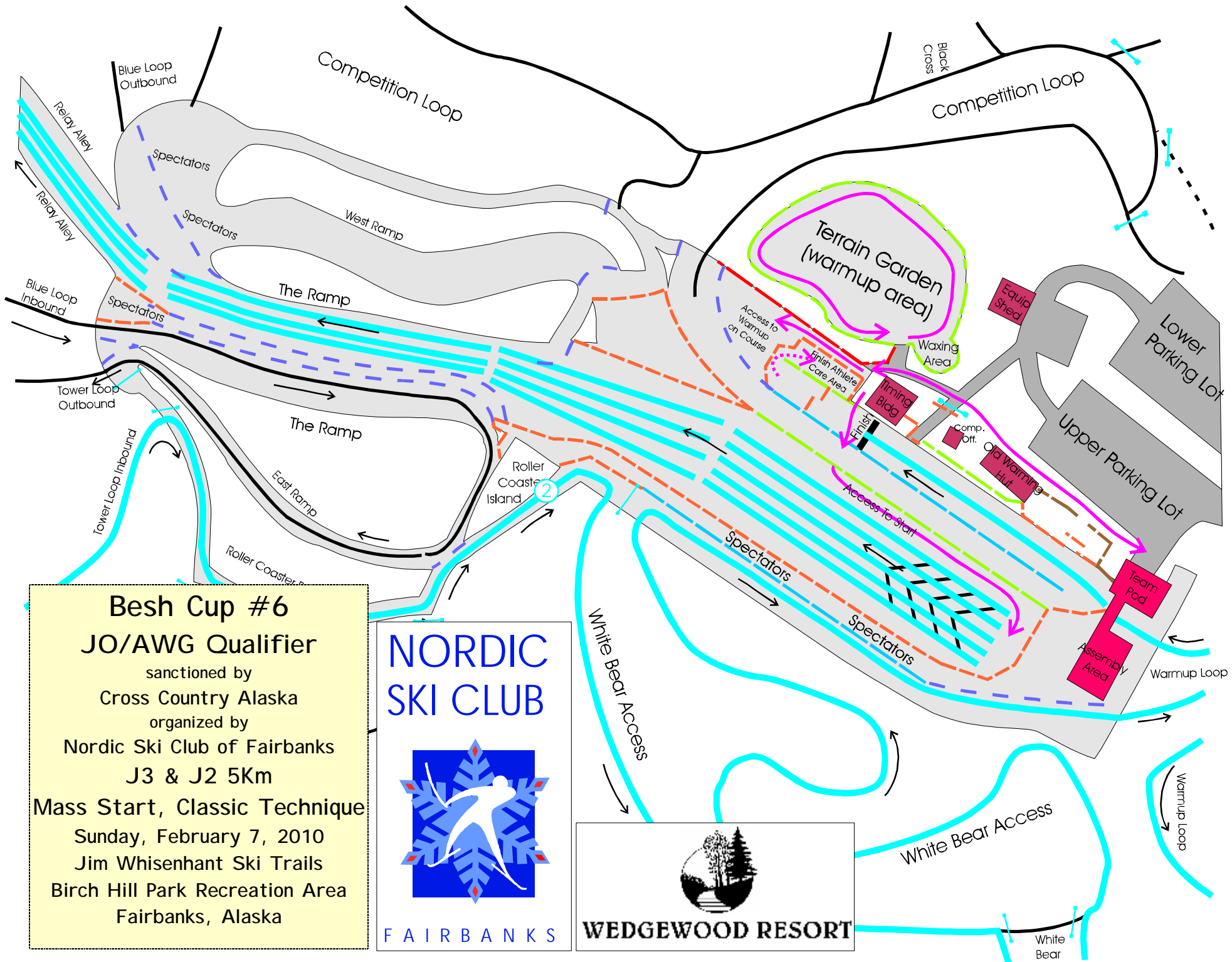
CCAK JO Qualifier

Organized by NSC Fairbanks
 Jim Whisenant Ski Trails
 Birch Hill Park Recreation Area
 Fairbanks, Alaska

J3&J2 Boys and Girls 5Km
 Classic Technique
 Mass Start
 Blue Course

Technical Information:
 Measured Length: 5148m
 Height Difference (HD): 73m
 Total Climb (TC): 162m
 Maximum Climb (MC): 54m
 Climb per Km: 31.4m/km

Competition Committee:
 Technical Delegate: Lin Hinderman
 Chief of Competition: John Estle
 Chief of Secretariat: tba
 Chief of Course: Tom Helmers
 Assistant Chief of Course: Bill Husby
 Chiefs of Stadium: Bob Wilkinson,
 Dave Murray, Susan Faulkner
 Chief of Timing: Carol Haas
 Chief of Competition Control: Byron & Chris Broda
 Chief of Athlete Care: tba



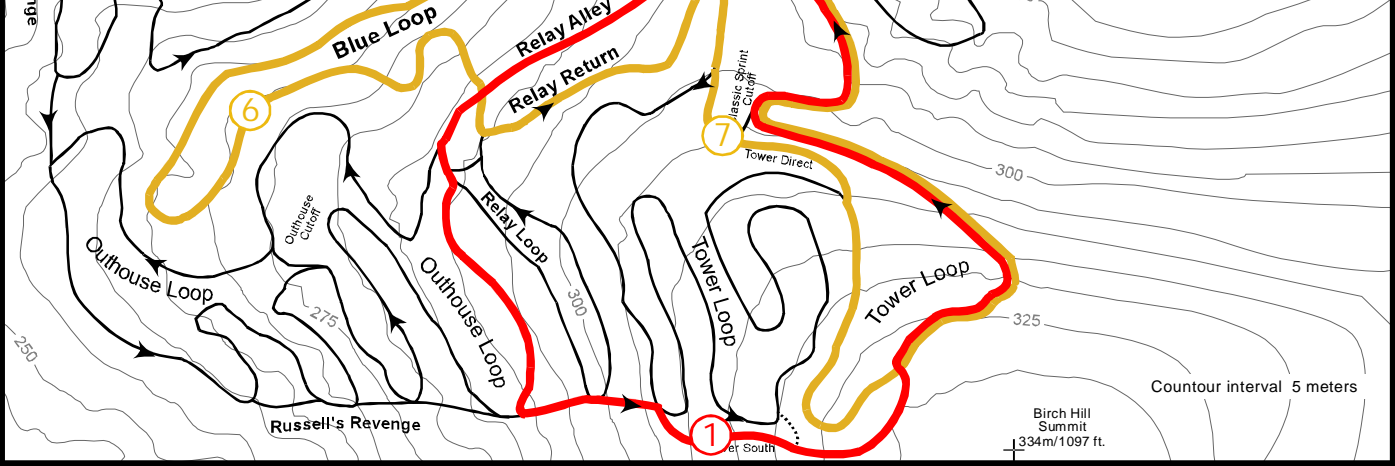
Besh Cup #6
JO/AWG Qualifier
 sanctioned by
 Cross Country Alaska
 organized by
 Nordic Ski Club of Fairbanks
J3 & J2 5Km
Mass Start, Classic Technique
 Sunday, February 7, 2010
 Jim Whisenant Ski Trails
 Birch Hill Park Recreation Area
 Fairbanks, Alaska

NORDIC SKI CLUB

FAIRBANKS

WEDGEWOOD RESORT

Nordic Ski Club of Fairbanks
 PO Box 80111
 Fairbanks, AK 99708
 NSCF Office: 907-474-4242
 NSCF Office Fax: 907-474-2073
 Birch Hill Weather: 907-457-4837
 Race Hotline: 907-457-4434
 Jr. Nordic Hotline: 907-457-4437
 e-mail: nordic@ptialaska.net
 web: www.nscfairbanks.org



Besh Cup #6

Sunday, February 7, 2010

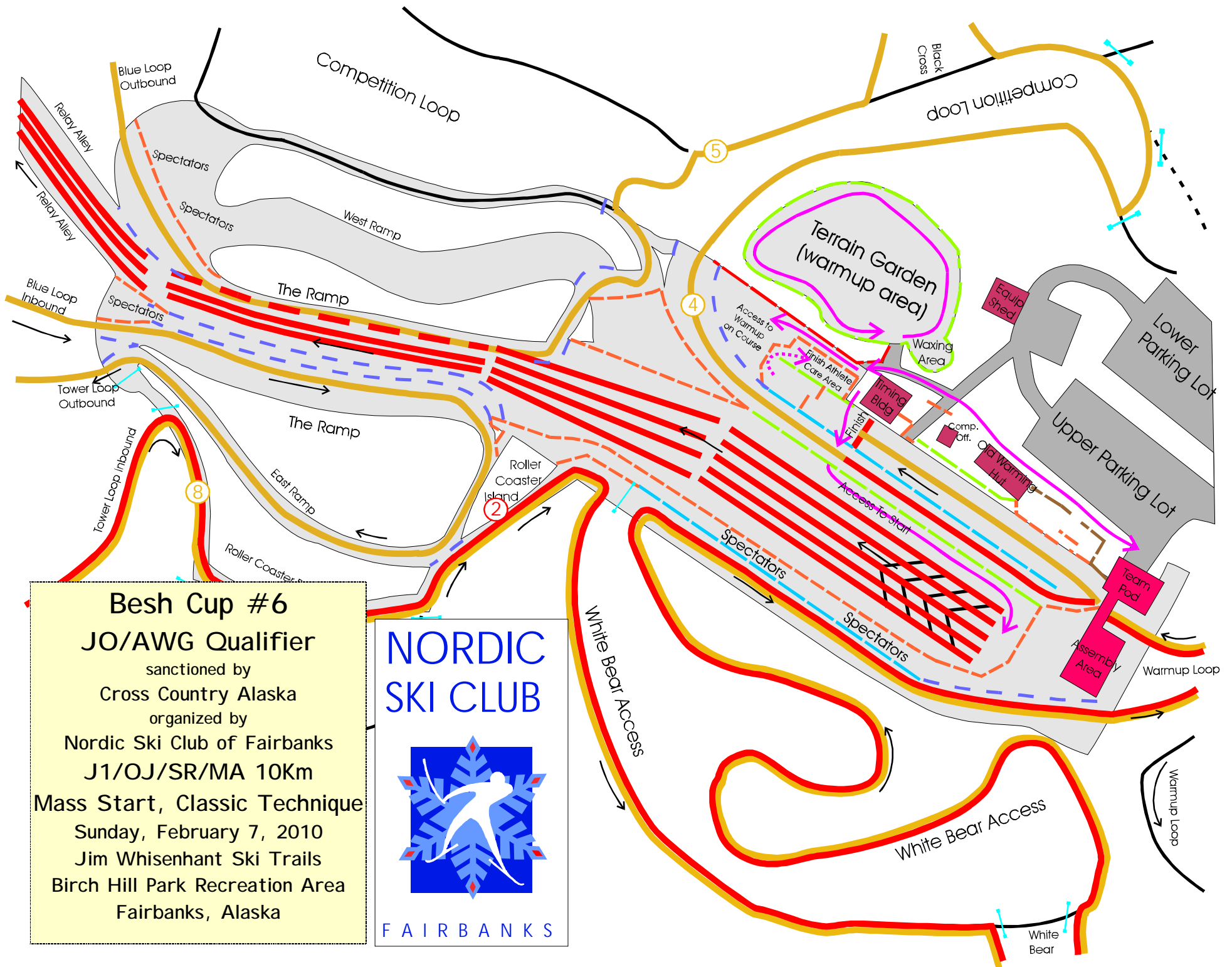
CCAK JO Qualifier

Organized by NSC Fairbanks
 Jim Whisenant Ski Trails
 Birch Hill Park Recreation Area
 Fairbanks, Alaska

J1-OJ-SR-MA M&F 10Km
 Mass-Start Classic Technique
Red Course (lap 1) &
Gold Course (lap 2)

Technical Information:
 Measured Length: 10104m
 Height Difference (HD): 89m
 Total Climb (TC): 355m
 Maximum Climb (MC): 54m
 Climb per Km: 35.2m/km

Competition Committee:
 Technical Delegate: Lin Hinderman
 Chief of Competition: John Estle
 Chief of Secretariat: tba
 Chief of Course: Tom Helmers
 Assistant Chief of Course: Bill Husby
 Chiefs of Stadium: Bob Wilkinson,
 Dave Murray, Susan Faulkner
 Chief of Timing: Carol Haas
 Chief of Competition Control: Byron & Chris Broda
 Chief of Athlete Care: tba



Besh Cup #6
JO/AWG Qualifier
 sanctioned by
 Cross Country Alaska
 organized by
 Nordic Ski Club of Fairbanks
J1/OJ/SR/MA 10Km
 Mass Start, Classic Technique
 Sunday, February 7, 2010
 Jim Whisenant Ski Trails
 Birch Hill Park Recreation Area
 Fairbanks, Alaska

