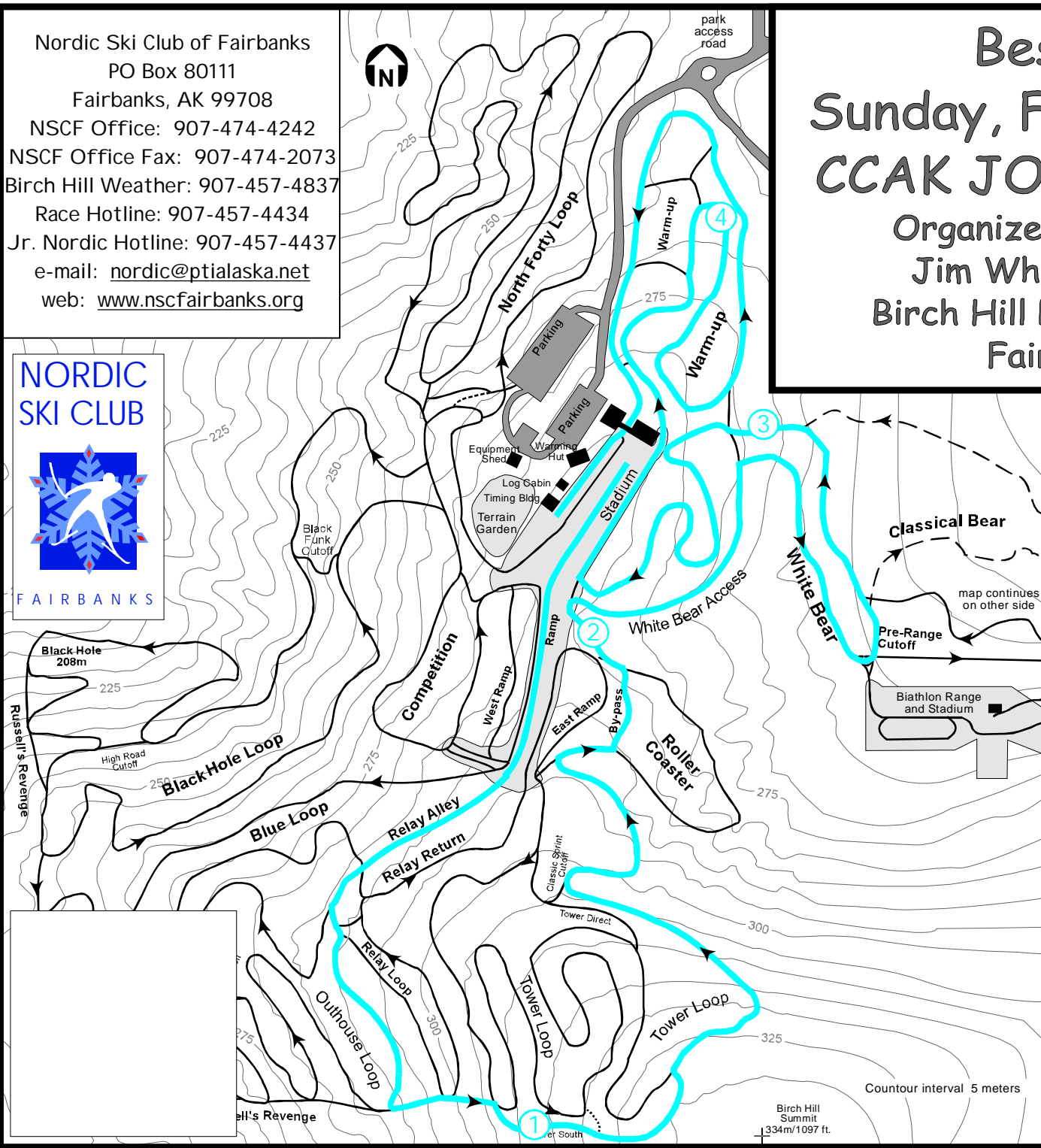


Nordic Ski Club of Fairbanks
 PO Box 80111
 Fairbanks, AK 99708
 NSCF Office: 907-474-4242
 NSCF Office Fax: 907-474-2073
 Birch Hill Weather: 907-457-4837
 Race Hotline: 907-457-4434
 Jr. Nordic Hotline: 907-457-4437
 e-mail: nordic@ptialaska.net
 web: www.nscfairbanks.org

**NORDIC
 SKI CLUB**



FAIRBANKS



Besh Cup #6

Sunday, February 3, 2008

CCAK JO/AWG Qualifier

Organized by NSC Fairbanks
 Jim Whisenant Ski Trails
 Birch Hill Park Recreation Area
 Fairbanks, Alaska

J3&J2 Boys and Girls 5Km
 Free Technique
 Mass Start
 Blue Course

Technical Information:
 Measured Length: 5148m
 Height Difference (HD): 73m
 Total Climb (TC): 162m
 Maximum Climb (MC): 54m
 Climb per Km: 31.4m/km

Competition Committee:

- Technical Delegate:
- Chief of Competition: John Estle
- Chief of Secretariat: Rikke Mery
- Chief of Course: Russ Lizotte
- Assistant Chief of Course: Tom Helmers
- Chief of Stadium: Susan Faulkner
- Stadium Ass'ts: Bob Wilkinson, Dave Murray
- Chief of Timing:
- Chief of Competition Control: John Carlson
- Chief of Athlete Care: